

DOCUMENT RESUME

ED 356 737

HE 026 393

AUTHOR Hines, Edward R.  
TITLE State Higher Education Appropriations, 1991-92.  
INSTITUTION State Higher Education Executive Officers Association.  
REPORT NO ISBN-1-881543-00-5  
PUB DATE Apr 92  
NOTE 36p.  
AVAILABLE FROM State Higher Education Executive Officers, 707 Seventeenth Street, Suite 2700, Denver, CO 80202-3427 (\$12; data also available in machine readable form for \$25, prepayment preferred, from Center for Higher Education, 331 DeGarmo Hall, Illinois State University, Normal, IL 61761).  
PUB TYPE Statistical Data (110) -- Reports - Research/Technical (143) -- Machine-Readable Data Files (MRDF) (102)  
EDRS PRICE MF01/PC02 Plus Postage.  
DESCRIPTORS Comparative Analysis; \*Educational Finance; \*Financial Support; \*Fiscal Capacity; Higher Education; \*Resource Allocation; \*State Aid; State Colleges; Statistical Data; Tax Allocation; Trend Analysis

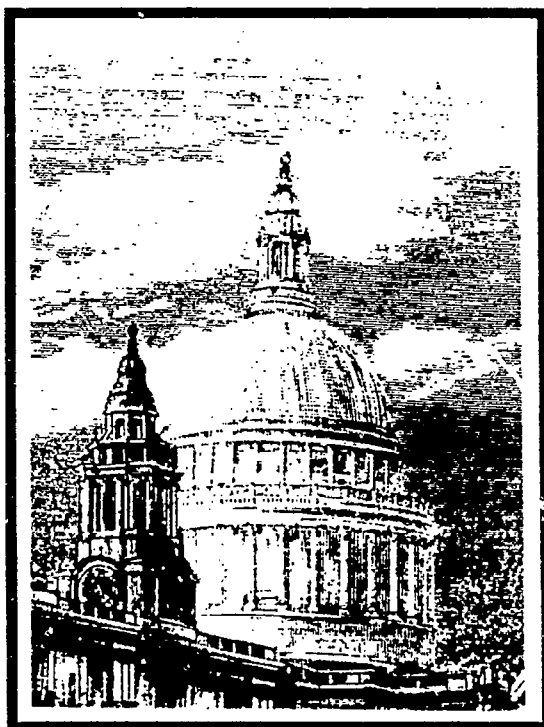
ABSTRACT

This report provides state-by-state figures concerning tax appropriations for the operating expenses of state colleges and universities. Included are an overall analysis of the recent 2-year changes in appropriations, an analysis by geographical region, and the trends in state support. Also highlighted in this analysis are the appropriation levels of states with the highest industrialization and the densest populations, and whose systems of higher education appropriate more than \$1 billion to higher education each year. This report shows 12 states meeting these criteria. Statistical data (comprising nearly three quarters of the report) represent only the state tax appropriations, not actual expenditures. In addition, the data include appropriations for state coordinating or governing boards for selected statewide programs administered by those boards, for state scholarship agencies, or for private or independent institutions. Data do not include appropriations for debt service or for capital outlays. Revisions to original appropriations are also included. Overall, it is reported that while state governments appropriated \$40 billion to the nation's colleges and universities for fiscal year 1992, revenue capacity in 1992 was a major problem for states, given the increased demands for state resources and the negative effect of a nationwide recession. (GLR)

\*\*\*\*\*  
\* Reproductions supplied by EDRS are the best that can be made \*  
\* from the original document. \*  
\*\*\*\*\*

HD356737

# State Higher Education Appropriations 1991-92



Edward R. Hines  
Illinois State University

1/2 20 373

TEAM ...  
MATERIALS ...

SHHEO

THE ...  
NATIONAL ...

U.S. DEPARTMENT OF EDUCATION  
OFFICE OF STATE AND LOCAL EDUCATION ASSISTANCE  
...  
...  
...  
...  
...  
...  
...  
...  
...

SHHEO

State Higher Education Executive Officers

BEST COPY AVAILABLE

---

# State Higher Education Appropriations 1991-92

Edward R. Hines  
Illinois State University

with assistance from  
Gwen Pruyn

State Higher Education Executive Officers  
707 Seventeenth Street, Suite 2700  
Denver, Colorado 80202-3427

April 1992

---

© Copyright 1992 by the  
State Higher Education Executive Officers.  
All rights reserved.

Additional copies of this report are available for \$12 prepaid from:  
State Higher Education Executive Officers  
707 Seventeenth Street, Suite 2700  
Denver, Colorado 80202-3427  
Telephone: (303) 299-3686  
FAX: (303) 296-8332

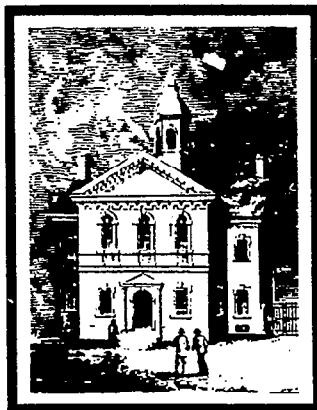
Microcomputer disks of the appropriations data are available from:  
Center for Higher Education  
331 DeGarmo Hall  
Illinois State University  
Normal, IL 61761

The data are in tabular form for each state for each fiscal year since FY 1977.  
The software program used is LOTUS 1-2-3, Release 2.01.  
Price: \$25.00 (prepayment preferred).  
For more information, please telephone Gwen Pruyne (309) 438-5405.

ISBN 1-881543-00-5

---

# Contents



<b>Preface</b>	v
<b>Acknowledgments</b>	v
<b>I. Fiscal Year 1991-92 in Review</b>	1
Recent Two-Year Changes	2
The Megastates	3
A Regional View	3
Trends in State Support	3
Revenue Variations	
Support for Student Aid	
Support for Community Colleges	
Comparative Measures	5
<b>II. State-by-State Appropriations</b>	7
Nature of the Data	7
Summary Table	8
State Tables	9
<b>Related Sources</b>	30

---

## Preface

**T**he State Higher Education Executive Officers is proud to assume responsibility as publisher of *State Higher Education Appropriations 1991-92*. We continue a long tradition begun by the National Association of State Universities and Land Grant Colleges (NASULGC) in 1960. This is the 33rd consecutive report enumerating the appropriation of state tax dollars for operating expenses in the 50 states.

These figures reflect legislative decisions in the 50 states about state tax appropriations for the operating expenses of colleges and universities. These data are reported by a network of state government and higher education officials and are published three times during the year. Initially, the figures are compiled as soon as possible after legislative decisions are made and appear in the publication *Grapevine*, the monthly research report edited by Edward R. Hines and published by the Center for Higher Education at Illinois State University. These state tax appropriations data are then published in somewhat abbreviated form in the October issue of the *Chronicle of*

*Higher Education*. The data are published in complete form in this volume to offer analysts, lawmakers, and researchers assistance in formulating budgets for the following year.

No other effort reports in such timely fashion on the extent and nature of the state financial commitment to higher education. At a time when the finances of the states are in such flux and the future portends even greater change, we are committed to providing readers with the most up-to-date and accurate analysis of state support possible. Consistency over time is one of the hallmarks of these data; but you can also expect to see additions and changes to improve the usefulness and value of the report to the states and to the higher education community. This year's report contains changes in format that make the report more readable. Your comments and suggestions for additional improvements are welcomed.

James R. Mingle  
Executive Director

## Acknowledgments

**T**o the many people who contribute to the production of this summary document—thank you! Gathering the data on state appropriations depends on a network of “correspondents” in the 50 states whose willing and consistent efforts give the document a solid foundation.

Gwen B. Pruyne, managing editor of *Grapevine*, prepared the state reports in this document and provided editorial assistance. Special appreciation goes to Sara Wills for her attention to the many details of production.

The Advisory Committee, which was formed in 1984 and which meets annually during the Inservice Education Program of SHEEO, provides invaluable technical and policy advice. Its members, listed below, help make it possible to provide timely, accurate data.

### ADVISORY COMMITTEE

Brenda Albright, Tennessee Higher Education Commission  
Ross Hodel, Illinois Board of Higher Education  
Jacquelin Johnson, Washington Higher Education Coordinating Board  
Charles Lenth, NCES/SHEEO Communications Network  
James Mingle, SHEEO  
Michael Mullen, Virginia Council of Higher Education  
Robert Sweeney, American Association of State Colleges and Universities  
Kevin Woolfork, California Postsecondary Education Commission

# I.

## Fiscal Year 1992 in Review

State governments appropriated more than \$40 billion to the nation's colleges and universities for Fiscal Year 1992 (FY92). Although this was the second consecutive year in which total appropriations exceeded \$40 billion, it was also the first year on record in which total appropriations declined. Appropriations for FY91 were \$40.139 billion, but for FY92 they reached only \$40.067 billion, a decline of approximately \$72 million. The corresponding percentage change was a decline of two-tenths of one percent (-0.02 percent).

It has been the custom to report two-year percentage changes in this annual report, to even out the idiosyncratic "peaks and valleys" that appear in single years. Because support for higher education dropped from FY91 to FY92, however, this report also includes one-year changes.

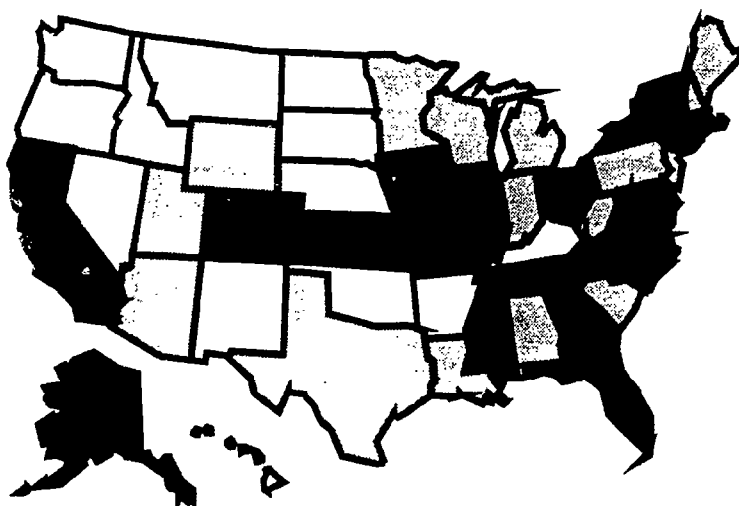
### Recent Two-Year Changes

A look at how appropriations have changed over the past two years shows that total appropriations rose by nearly \$1 billion or 2.5 percent from FY90 to FY92. However, both gains are, by far, the smallest on record. Dollar gains over two years have characteristically exceeded \$2 billion and, until FY91, percentage gains exceeded 11 percent. Until 1991, appropriations for higher education at least doubled each ten years. Had this record of support continued in FY92, the appropriations would have been \$6 billion higher. Figure 1 shows these two-year changes from FY90 to FY92 state-by-state.

The small gain from FY90 to FY92 contrasts sharply

Figure 1.

PERCENTAGES OF TWO-YEAR GAIN IN APPROPRIATIONS OF STATE TAX FUNDS FOR ANNUAL OPERATING EXPENCES OF HIGHER EDUCATION IN THE 50-STATES, FY1992 OVER FY 1990



Alabama	2	Montana	21
Alaska	1	Nebraska	16
Arizona	10	Nevada	31
Arkansas	20	New Hampshire	9
California	3	New Jersey	1
Colorado	4	New Mexico	18
Connecticut	-2	New York	-13
Delaware	5	North Carolina	-1
Florida	-5	North Dakota	12
Georgia	-1	Ohio	2
Hawaii	15	Oklahoma	20
Idaho	24	Oregon	16
Illinois	1	Pennsylvania	8
Indiana	11	Rhode Island	-17
Iowa	7	South Carolina	4
Kansas	3	South Dakota	13
Kentucky	17	Tennessee	-2
Louisiana	9	Texas	8
Maine	8	Utah	9
Maryland	-2	Vermont	-3
Massachusetts	-28	Virginia	-5
Michigan	9	Washington	13
Minnesota	5	West Virginia	10
Mississippi	-5	Wisconsin	9
Missouri	0	Wyoming	8

12 to 31%
  8 to 11%
  0 to 7%
  -28 to -1%

with the much larger gains characteristic of the last three decades. During the 1960s and early 1970s, appropriations to higher education rose between 20 to 30 percent every two years. In the 1980s, increases ranged from ten percent to 20 percent. Only in the 1990s have increases fallen below ten percent. (See Figure 2.)

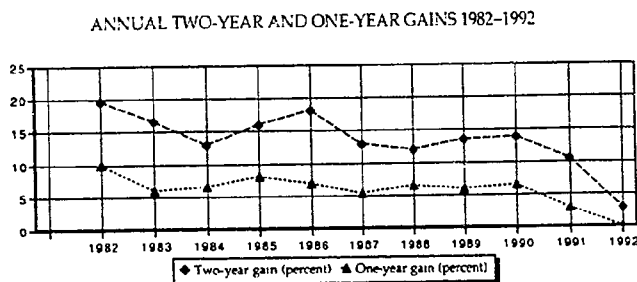
Table 1 shows that in the largest group of states (40), two-year gains for FY92 were smaller than gains reported the previous year. In fact, 12 states reported losses. The number of states reporting increases in two-year percentage gains has fallen each year since 1990, when 31 states reported increases. The number declined to 17 in 1991 and to seven in the current fiscal year (Arkansas, Hawaii, Montana, New Hampshire, New Jersey, West Virginia, and Wyoming). Over the same period, the number of states reporting decreases in two-year percentage gains rose. In 1990, 15 states reported a decrease from the preceding year. Since then, that number has more than doubled. In 1991, 26 states reported decreases, and 40 states reported decreases in 1992.

### The Megastates

The "megastates" are those states—highly industrialized, with large populations and relatively large systems of higher education—that appropriate more than \$1 billion to higher education each year. In FY91, there were 12 megastates. Appropriations were largest in California (\$6 billion), New York (\$3 billion), and Texas (\$2.6 billion). Florida, Illinois, Michigan, Minnesota, New Jersey, North Carolina, Ohio, Pennsylvania, and Virginia each appropriated between \$1 billion and \$1.7 billion annually to higher education.

In FY92, California continued to lead the group with an appropriation of approximately \$5.7 billion. Texas, which appropriated \$2.8 billion, moved into second place ahead of New York, which appropriated less than \$2.8 billion. All the other megastates continued to appropriate between \$1 billion and \$1.7 billion.

Figure 2.



In many other ways, however, the picture changed. Minnesota appropriated less than \$1 billion, which reduced the number of megastates to 11. Although Michigan, New Jersey, Pennsylvania, and Texas increased appropriations in FY92, the total amounts appropriated in California, Florida, Illinois, New York, North Carolina, Ohio, and Virginia were lower than in FY91.

Seven megastates had positive two-year percentage gains and four had negative gains. Michigan led the positive gains with 9 percent, followed closely by Pennsylvania and Texas at 8 percent. These were the only megastates to appear in the top half of the rankings by two-year percentage gains. Eight megastates were in the bottom half. Four of these were in the third quartile (California at 3 percent, Ohio at 2 percent, Illinois and New Jersey at 1 percent) and four were in the bottom quartile (North Carolina at -1 percent, Florida and Virginia at -5 percent, and New York at -13 percent).

Only four megastates experienced positive single-year percentage gains. Texas led with a gain of 9 percent, followed by New Jersey at 7 percent, Pennsylvania at 6 percent, and Michigan at 3 percent. Illinois showed no gain, and six megastates had negative gains: New York (-11 percent), Florida and Virginia (-4 percent), North Carolina (-3 percent), California (-2 percent), and Ohio (-1 percent).

Table 1

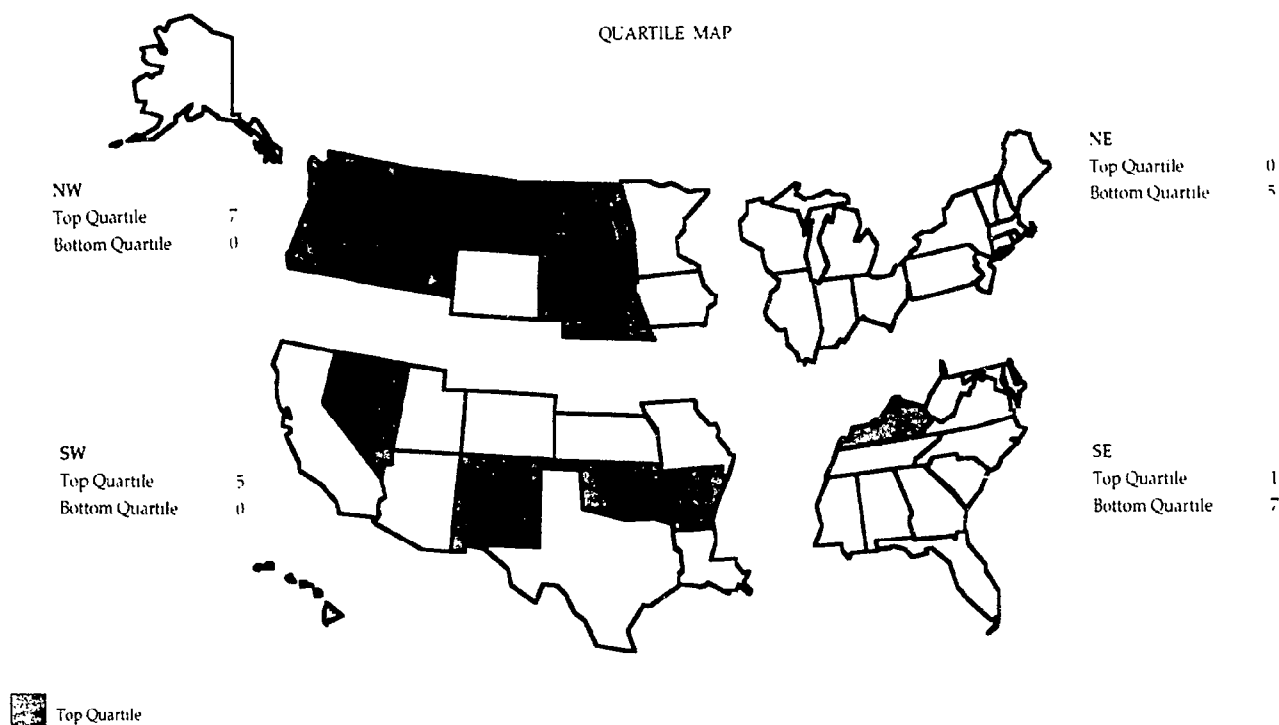
### CHANGES IN TWO-YEAR GAINS IN APPROPRIATIONS, FY91 TO FY92

State	FY91*	FY92	State	FY91*	FY92	State	FY91*	FY92
Alabama	12	2	Louisiana	21	9	Ohio	15	2
Alaska	9	1	Maine	21	8	Oklahoma	23	20
Arizona	14	10	Maryland	26	-2	Oregon	16	16
Arkansas	3	20	Massachusetts	20	-28	Pennsylvania	12	8
California	13	3	Michigan	11	9	Rhode Island	-1	17
Colorado	9	4	Minnesota	19	5	South Carolina	12	4
Connecticut	3	2	Mississippi	4	-5	South Dakota	16	13
Delaware	14	5	Missouri	16	0	Tennessee	8	-2
Florida	1	-5	Montana	11	21	Texas	15	8
Georgia	18	-1	Nebraska	30	16	Utah	12	9
Hawaii	11	15	Nevada	35	31	Vermont	11	-3
Idaho	27	24	New Hampshire	1	9	Virginia	5	-5
Illinois	22	1	New Jersey	-7	1	Washington	17	13
Indiana	16	11	New Mexico	21	18	West Virginia	4	10
Iowa	20	7	New York	3	13	Wisconsin	14	9
Kansas	18	3	North Carolina	12	-1	Wyoming	4	8
Kentucky	17	17	North Dakota	12	12			

Source: Grapevine



Figure 3.



### A Regional View

Arranging the 50 states by geographic regions and ranking two-year percentage gains by quartiles makes it possible to paint a regional picture of FY92 appropriations. Quartile groupings were based on descending two-year percentage gains. The number of states in each quartile may vary from year to year because of "natural breaks" between groupings at specific percentage points. This year, 13 states were in the top quartile (12 percent to 31 percent increases in appropriations from FY90 to FY92), 12 states were in the second quartile (8 percent to 11 percent increases), 13 states were in the third quartile (0 percent to 7 percent increases), and 12 states were in the bottom quartile (-28 percent to -1 percent decreases).

Figure 3 shows that none of the 14 northeastern states were in the top quartile, and five were in the bottom quartile. Four of the six New England states had negative two-year changes: Massachusetts (-28 percent), Rhode Island (-16 percent), Vermont (-3 percent), and Connecticut (-2 percent). New Hampshire led New England in two-year gains with 9 percent, followed closely by Maine with 8 percent.

The Southeast fared even worse—only one state was in the top quartile (Kentucky gained 17 percent) and seven of the remaining ten were in the bottom quartile.

West of the Mississippi, the picture brightened. Seven northwestern states were in the top quartile, none in the bottom. Five southwestern states were in the top quartile; and, like the northwest, none were in the bottom.

### Trends in State Support

As assessment continues of the overall decline in state support for higher education in FY92, much more will be said about its causes and consequences. The following analysis is only preliminary, but it can begin to suggest trends, as well as explanations for these trends.

*Revenue Variations.* In FY92, revenue capacity was a major problem for states, given the increased demands for state resources and the negative effect of a nationwide recession on the flow of tax funds. As legislatures struggled with difficult decisions, some met in extended sessions or held special sessions to consider fiscal matters.

Table 2 combines information about one-year changes in appropriations with information about increases in states' general funds to illustrate the "effort" selected states made to fund higher education. The data on general funds come from an annual survey by the National Conference of State Legislatures (NCSL) of chief fiscal officers of state legislatures; the data on higher education come from *Grapevine*.

If percentages of one-year gain are used as a measure of higher education "effort," some inferences may be drawn from Table 2. Using the FY 1992 medians, the revenue capacity of the top eight states was more than seven times that of the bottom states—5.9 percent versus 0.82 percent. States making greater effort for higher education had significantly greater revenue capacity than states making less effort—and greater willingness to support public services

Table 2

COMPARISON OF REVENUE CAPACITY, WILLINGNESS AND HIGHER EDUCATION EFFORT , PERCENTAGE INCREASE FY 1991-92

Top 8 States One-Year Gainers	General Revenue Increase (Capacity)	Total Increase in State Spending <sup>1</sup> (Willingness)	Higher Education Increase <sup>2</sup>	Bottom 8 States One-Year Gainers	General Revenue Increase (Capacity)	Total Increase in State Spending <sup>1</sup> (Willingness)	Higher Education Increase <sup>2</sup>
Arkansas	4.9	4.9	17	Virginia	5.4	-2.3	-4
Nevada	11.7	7.1	17	Connecticut	---- Not reported ----		-4
Montana	13.1	11.3	13	Florida	10.4	11.1	-4
North Dakota	-0.6	12.9	12	Alaska	-25.9	-0.2	-4
Oregon	8.3	8.3	10	Rhode Island	6.7	1.6	-9
Hawaii	6.6	-1.1	10	Georgia	6.4	3.7	-9
Texas	-----Not reported-----		9	New York	1.9	-1.6	-11
Oklahoma	3.2	4.4	9	Massachusetts	-----Not reported-----		-16
Mean in FY92	5.9	6.0	12.1	Mean in FY92	0.82	2.05	-7.6

Sources: Eckl, Corina L., Anthony M. Hutchinson and Ronald K. Snell. State Budget and Tax Actions, 1991. Denver, CO: National Conference of State Legislatures. <sup>1</sup>Grapevine

Table 3

COMPARATIVE APPROPRIATIONS PER CAPITA AND PER \$1000

State	Higher Education Appropriations FY 1991-92		Appropriations Per Capita		Appropriations Per \$1,000s Income		State	Higher Education Appropriations FY 1991-92		Appropriations Per Capita		Appropriations Per \$1,000s Income	
	(\$1,000s)	(\$)	Rank	(\$)	Rank	(\$1,000s)		(\$)	Rank	(\$)	Rank		
Alabama	791,638	195.93	10	13.03	8	New Mexico	349,378	230.60	4	16.12	2		
Alaska	179,981	327.21	1	15.05	3	New York	2,760,719	153.45	34	6.94	41		
Arizona	607,819	165.83	24	10.31	20	North Carolina	1,445,790	218.11	7	13.34	6		
Arkansas	383,560	164.57	27	11.49	16	North Dakota	145,535	227.83	5	15.03	4		
California	5,662,752	190.28	12	9.14	28	Ohio	1,460,068	134.60	43	7.66	39		
Colorado	523,785	158.99	32	8.40	35	Oklahoma	542,277	172.39	20	11.15	18		
Connecticut	503,748	153.25	35	6.01	46	Oregon	461,155	162.25	29	9.37	27		
Delaware	121,011	181.65	16	9.03	29	Pennsylvania	1,483,233	124.83	44	6.67	42		
Florida	1,486,480	114.89	46	6.15	44	Rhode Island	116,128	115.73	45	6.15	45		
Georgia	874,320	134.96	42	7.88	37	South Carolina	634,226	181.90	15	11.97	13		
Hawaii	321,201	289.83	2	14.17	5	South Dakota	97,273	139.76	40	8.82	32		
Idaho	195,881	194.57	11	12.70	9	Tennessee	692,402	141.97	39	8.93	31		
Illinois	1,734,761	151.27	37	7.42	40	Texas	2,821,810	166.12	23	9.90	23		
Indiana	899,643	162.27	28	9.59	25	Utah	319,561	185.48	13	13.21	7		
Iowa	563,570	202.96	9	11.77	14	Vermont	55,742	99.05	48	5.64	48		
Kansas	446,517	180.22	17	9.91	22	Virginia	1,030,112	166.49	22	8.43	34		
Kentucky	641,251	174.10	19	11.59	15	Washington	898,184	184.56	14	9.74	24		
Louisiana	574,336	136.10	41	9.38	26	West Virginia	277,921	154.96	33	11.29	17		
Maine	186,665	152.02	36	8.83	33	Wisconsin	863,337	176.49	18	10.02	21		
Maryland	804,886	168.33	21	7.69	38	Wyoming	124,902	275.36	3	16.93	1		
Massachusetts	583,569	97.00	49	4.30	49								
Michigan	1,535,999	165.28	25	8.98	30	<b>Total</b>	<b>40,066,323</b>	<b>161.51</b>	<b>161.51</b>	<b>8.62</b>			
Minnesota	995,429	227.52	6	12.11	12								
Mississippi	412,311	160.23	30	12.49	10								
Missouri	584,565	114.24	47	6.53	43								
Montana	131,910	165.08	26	10.81	19								
Nebraska	340,106	215.48	8	12.26	11								
Nevada	191,773	159.57	31	8.23	36								
New Hampshire	75,175	67.77	50	3.25	50								
New Jersey	1,132,432	146.49	38	5.87	47								

Sources: Appropriations from Grapevine.  
 1990 Population, U.S. Department of Commerce, Bureau of the Census.  
 Personal Income, U.S. Department of Commerce, Bureau of Economic Analysis.

generally (6.0 percent versus 2.05 percent). There was a sizable difference between the top and bottom states in percentages of one-year gain (12.1 percent versus -7.6 percent, a difference of 19 points).

*Support for Student Aid.* The appropriations data reported in this publication are intended for use in analyzing aggregate funds for higher education, not line items like state support for student financial aid. Thirty-one states did, however, isolate student financial aid in their FY92 budgets. In these states, the mean two-year gain in student financial aid was 15.4 percent. Note that this increase is more than six times the two-year gain for higher education nationwide. In 22 of the 31 states, percentage increases for student aid were larger than the percentage increases for higher education as a whole.

*Support for Community Colleges.* In recent years, the two-year percentage gains in state support for community colleges have been slightly to moderately greater than the percentage gains for all of higher education. In FY92, community colleges fared substantially better. In the 40 states where state

support for community colleges could be identified, a 7 percent gain occurred from FY90 to FY92, almost three times the gain for higher education as a whole. In only five states was the percentage gain for community colleges less than the gains for higher education generally.

---

### Comparative Measures

---

To compare efforts states make to support higher education, researchers and analysts commonly use two measures—appropriations per capita, and appropriations per \$1,000 of personal income. These measures are displayed in **Table 3**.

Caution must be exercised in interpreting these measures, however, because the only revenue source used is state tax appropriations. Although state tax appropriations are the largest revenue source for the public institutions, and an important source for private ones, a more complete analysis would need to consider local taxes, student tuition, and non-tax sources as well.

## II. State-by-State Appropriations

### Nature of the Data

**T**hese figures reflect legislative decisions in the 50 states about state tax appropriations for the operating expenses of colleges and universities. The data are published three times a year. They appear first in the *Grapevine* monthly research report. They are then published in somewhat abbreviated form in an October issue of *The Chronicle of Higher Education*. They appear in complete form in this volume to enable analysts, lawmakers, and researchers to formulate budgets for the following year.

*The data have five major characteristics.* They represent only one source of revenue—state tax appropriations for colleges and universities. Other revenue sources include, for example, local tax appropriations, which are especially important to community colleges in a number of states. Student tuition and fees, another important revenue source, became controversial in the 1980s on the grounds that they were being used to supplant state taxes and general revenue funds.

They represent appropriations, not actual expenditures. Though in some states separating the legislature's appropriations from actual expenditures becomes difficult, this report, to the extent possible, contains only appropriations.

The data, which are reported by campuses, include appropriations for state coordinating or governing boards, as well as for selected statewide programs administered by the coordinating or governing boards, by state scholarship agencies, or by private or independent institutions (as

long as the source of funds is state taxes). In many instances, sums appropriated to agencies other than higher education are included if they are destined for higher education. Examples include appropriations for medical and health education and research, and increases in employee fringe benefits. The data do not include appropriations for debt service or for capital outlays.

Revisions to original appropriations are included. They appear most frequently in the column of data for the preceding fiscal year, which appears beside the column of data for the current fiscal year. In the state tabulations, an "(R)" following the FY 1990-91 heading indicates that revisions have been made for that year. Revisions reflect either reductions (which may be termed recisions, reversions, or amounts withheld) or additions (supplements or enhancements) to original appropriations.

Only revisions received by October 1 can appear in the *Chronicle of Higher Education*. Revisions received by January 1 appear in this publication. Revisions received thereafter are held over until the following year.

Differing budget practices make certain categories of data unique to a selected state rather than general to all states, so the data are not directly comparable. Indeed, it is not possible to reflect both total state tax effort and comparability in one data set. The data are, however, timely, accurate, and comprehensive—timely because they are published as soon as possible after legislative decisions are made, accurate because they include revisions, comprehensive because they reflect total state taxes appropriated for the operation of higher education.

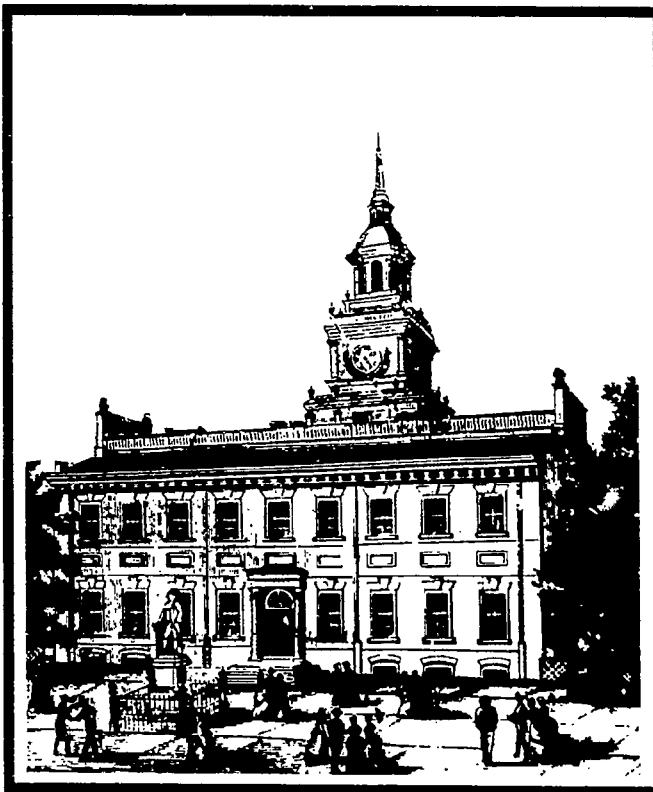


Table 4

APPROPRIATIONS OF STATE TAX FUNDS FOR OPERATING EXPENSES OF HIGHER EDUCATION FOR FISCAL YEARS 1981-82,  
1989-90, 1990-91 AND 1991-92, WITH PERCENTAGES OF GAIN OVER THE MOST RECENT ONE, TWO AND TEN YEARS  
(in thousands of dollars)

States	Year 1981-82	Year 1989-90	Year 1990-91	Year 1991-92	1-year Gain %	2-year Gain %	10-year Gain %
Alabama	376,591	776,641	815,623	791,638	-3	2	110
Alaska	169,095	178,188	187,892	179,981	-4	1	6
Arizona	299,317	553,547	598,328	607,819	2	10	103
Arkansas	183,980	320,613	328,904	383,560	17	20	108
California	3,222,335	5,487,892	5,773,949	5,662,752	-2	3	76
Colorado	305,791	505,994	508,758	523,785	3	4	71
Connecticut	229,405	511,567	522,606	503,748	-4	-2	120
Delaware	72,125	115,541	117,429	121,011	3	5	68
Florida	802,316	1,557,091	1,548,285	1,486,480	-4	-5	85
Georgia	498,739	884,669	961,283	874,320	-9	-1	75
Hawaii	161,466	279,241	290,925	321,201	10	15	99
Idaho	95,100	158,247	183,997	195,881	6	24	106
Illinois	1,031,293	1,712,850	1,735,316	1,734,761	0	1	68
Indiana	463,703	814,021	876,162	899,643	3	11	94
Iowa	322,582	528,499	579,777	563,570	-3	7	75
Kansas	278,662	435,609	451,299	446,517	-1	3	60
Kentucky	339,632	550,328	609,228	641,251	5	17	89
Louisiana	454,754	527,037	585,703	574,336	-2	9	26
Maine	66,941	173,534	186,285	186,665	0	8	179
Maryland	385,949	822,337	809,926	804,886	-1	-2	109
Massachusetts	417,938	815,998	697,248	583,569	-16	-28	40
Michigan	848,532	1,408,006	1,486,694	1,535,999	3	9	81
Minnesota	554,704	946,779	1,007,656	995,429	-1	5	79
Mississippi	300,696	432,971	423,477	412,311	-3	-5	37
Missouri	323,860	582,557	602,146	584,565	-3	0	80
Montana	83,693	109,416	116,648	131,910	13	21	58
Nebraska	181,645	293,242	329,122	340,106	3	16	87
Nevada	65,851	146,636	163,324	191,773	17	31	191
New Hampshire	39,323	69,035	72,959	75,175	3	9	91
New Jersey	560,306	1,124,367	1,060,924	1,132,432	7	1	102
New Mexico	184,553	296,410	335,468	349,378	4	18	89
New York	1,855,429	3,185,045	3,090,116	2,760,719	-11	-13	49
North Carolina	758,466	1,458,516	1,484,279	1,445,790	-3	-1	91
North Dakota	104,638	129,756	129,757	145,535	12	12	39
Ohio	707,538	1,427,041	1,472,920	1,460,068	-1	2	106
Oklahoma	325,553	453,090	499,621	542,277	9	20	67
Oregon	252,602	395,898	420,047	461,155	10	16	83
Pennsylvania	825,546	1,370,011	1,395,732	1,483,233	6	8	80
Rhode Island	84,154	139,174	127,075	116,128	-9	-17	38
South Carolina	360,902	612,508	638,296	634,226	-1	4	76
South Dakota	58,545	86,064	90,618	97,273	7	13	66
Tennessee	366,483	709,116	711,978	692,402	-3	-2	89
Texas	1,905,007	2,624,288	2,579,342	2,821,806	9	8	48
Utah	173,772	292,720	305,233	319,561	5	9	84
Vermont	33,876	57,596	56,810	55,742	-2	-3	65
Virginia	543,961	1,089,276	1,068,485	1,030,112	-4	-5	89
Washington	497,821	796,400	857,135	898,184	5	13	80
West Virginia	192,307	252,180	275,672	277,921	1	10	45
Wisconsin	532,002	795,383	843,543	863,337	2	9	62
Wyoming	82,644	116,183	124,902	124,902	0	8	51
<b>Totals</b>	<b>22,982,123</b>	<b>39,109,106</b>	<b>40,138,905</b>	<b>40,066,823</b>			
Weighted average percentages of gain					0	3	74

## State Tables

### ALABAMA

State tax-fund appropriations for the operating expenses of higher education for fiscal years 1990-91 and 1991-92 in Alabama.

Institutions	Sums appropriated (in thousands of dollars)	
	1990-91(R)	1991-92
University of Alabama		
Tuscaloosa	90.107	88.188
Birmingham	156.828	152.393
Huntsville	30.358	29.740
<b>Subtotal, U of A,</b>	<b>277.293</b>	<b>276.320</b>
Auburn University System		
Auburn, Main Campus	139.166	136.311
Montgomery campus	14.288	14.014
Subtotal, AU,	153.454	150.325
University of South Alabama	57.121	57.176
Troy State U System		
TSU, Main campus	16.431	15.978
TSU, Montgomery	3.307	3.215
TSU, Dothan-Fi Rucker	2.968	2.886
Subtotal, TSU	22.706	22.079
Jacksonville State U	21.882	21.218
Alabama A&M University	21.003	20.594
Alabama State University	20.149	19.994
University of North Alabama	16.036	15.686
University of Montevallo	11.244	10.944
Livingston University	6.749	6.636
Athens State College	4.929	5.099
Junior Colleges*	169.235	161.199
Postsecondary Ed Dept	1.973	2.422
Private Institutions	5.335	4.664
Pvt school student grants	5.143	4.082
Subtotal, private,	10.478	8.746
Marine environment consortium	1.831	1.913
Scholarships		
Medical scholarships	633	613
Dental scholarships	165	159
Optometric scholarships	139	135
Chiropractic scholarships	46	
National Guard scholarships	188	182
Subtotal, scholarships,	1,171	1,089
Comm. on Higher Ed	1.730	2.061
Student aid program	3.054	2.953
Special Projects Fund		
Eminent Scholars	1.870	
EPSCOR Research Consortium	935	
Dept of Veterans Affairs	4,123	3,991
Small business consortia	542	525
So Regional Ed Bd	373	361
Other statewide	5,742	6,306
<b>Total</b>	<b>815,623</b>	<b>791,638</b>

\*Includes technical schools, formerly reported separately

### ALASKA

State tax-fund appropriations for the operating expenses of higher education for fiscal years 1990-91 and 1991-92 in Alaska.

Institutions	Sums appropriated (in thousands of dollars)	
	1990-91	1991-92
University of Alaska		
Fairbanks	\$ 52,504	\$ 51,759
Rural College	6,170	4,670
Rural College/Chukchi	956	935
Rural College/Kuskokwim	2,914	2,878
Rural College/Northwest	1,168	1,152
Rural College/Bristol Bay		449
Rural College/Interior		980
Organized research	12,277	12,191
Sch Fisheries-Ocean Sci	4,752	4,917
Coop extension service	3,431	3,391
Regional Voc-Tech Ed	34	1,628
<b>Subtotal, U of A, F</b>	<b>84,206</b>	<b>84,950</b>
Anchorage	41,178	40,787
Kenai Peninsula College	2,346	2,152
Kodiak College	1,496	1,505
Matanuska-Susitna College	1,792	1,844
Homer Campus		247
Prince William Sound Comm	1,604	1,581
Ctr Internatl Business	612	619
Organized research	1,264	1,141
Mines & petroleum	120	
SW Higher Ed Armed Forces	1	484
Regional Voc-Tech	172	6,937
<b>Subtotal, U of A, A</b>	<b>50,585</b>	<b>57,297</b>
Southeast		
Juneau	9,508	9,431
Sitka	1,457	1,359
Ketchikan	1,105	1,172
Regional Voc-Tech	27	1,220
<b>Subtotal, U of A, S</b>	<b>12,097</b>	<b>13,182</b>
Statewide programs & services		
Statewide services	8,365	6,626
Network	5,911	5,880
Voc-Tech	4	219
<b>Subtotal, St-wide</b>	<b>14,280</b>	<b>12,725</b>
Statewide Voc-Tech Programs	9,214	
<b>Subtotal, U of A,</b>	<b>170,382</b>	<b>168,154</b>
WICHE	1,160	1,025
Student financial aid	10,000	4,000
Postsecondary Education Comm	6,350	6,802
<b>Total</b>	<b>\$187,892</b>	<b>\$179,981</b>

Note: For FY1992, several changes occurred in the allocation process; chief among these was the distribution of funds to regional vocational-technical programs and the creation of four campus units. The subtotals for the University of Alaska are comparable, even though the campus allocations are not.

**ARIZONA**

State tax-fund appropriations for the operating expenses of higher education for fiscal years 1990-91 and 1991-92 in Arizona.

Institutions	Sums appropriated (in thousands of dollars)	
	1990-91(R)	1991-92
University of Arizona	\$196,975	\$199,939
College of medicine	44,170	45,412
Subtotal, U of A	241,145	245,351
Arizona State U, Tempe	181,966	181,104
West campus	24,557	27,426
Subtotal, ASU,	206,523	208,530
Northern Arizona University	67,984	71,620
Board of Regents and WICHE	6,503	6,751
Subtotal, State U's,	522,155	532,252
State aid to comm colls	75,538	74,959
Comm College Board	635	608
Subtotal, C C's,	76,173	75,567
<b>Total</b>	<b>\$598,328</b>	<b>\$607,819</b>

**ARKANSAS**

State tax-fund appropriations for the operating expenses of higher education for fiscal years 1990-91 and 1991-92 in Arkansas.

Institutions	Sums appropriated (in thousands of dollars)	
	1990-91(R)	1991-92
U of Arkansas System		
Fayetteville campus	\$ 64,479	\$ 69,019
Medical sciences	52,166	57,197
Ag experiment stations	15,293	16,970
Coop extension service	15,385	16,594
Archeological survey	1,065	1,116
Little Rock campus	31,216	34,194
Pine Bluff campus	12,425	13,360
Monticello campus	7,288	7,840
System administration	1,643	1,794
Subtotal, U of A	200,960	218,084
Arkansas State U	29,615	33,042
Beebe branch	3,475	3,943
Subtotal, ASU	33,090	36,985
Southern Arkansas U	8,648	8,994
El Dorado branch	1,436	1,636
Technical branch	3,430	3,593
Subtotal, SAU	13,514	14,223
U of Central Arkansas	23,324	25,891
Arkansas Tech U	12,722	13,839
Henderson State U	10,103	11,312
Community Colleges	24,745	28,011
Technical Colleges*		13,834
Corporate Tax		7,324
Subtotal, T C's		21,158

*continued*

*Alabama continued*

So Regional Education Board	100	135
Dental & vet aid	1,569	1,599
Other dental, vet, optometry	532	554
State scholarship aid (SSiG)	4,005	3,347
Dependents & survivors scholar	60	72
Other state scholarships	910	4,730
Other appropriations	3,270	3,620
<b>Total</b>	<b>\$328,904</b>	<b>\$383,560</b>

\*Enacted during the last legislative session was an increase in the state corporate tax to fund a restructuring of the vocational-technical schools. As of July 1, 1991, twelve of those institutions became technical colleges and came under the auspices of the State Board of Higher Education.

**CALIFORNIA**

State tax-fund appropriations for the operating expenses of higher education for fiscal years 1990-91 and 1991-92 in California.

Institutions	Sums appropriated (in thousands of dollars)	
	1990-91(R)	1991-92
University of California	\$2,135,733	\$2,111,888
California State University		
San Diego	147,856	135,405
Long Beach	125,378	113,807
San Jose	122,637	113,296
Northridge	117,654	108,168
San Luis Obispo	110,220	100,663
Sacramento	108,864	100,491
San Francisco	104,973	96,399
Fresno	101,466	93,820
Pomona	95,621	88,709
Fullerton	93,741	84,530
Los Angeles	91,995	83,395
Chico	88,814	82,126
Hayward	64,826	60,107
Humboldt	54,778	52,173
San Bernardino	49,315	47,407
Dominguez Hills	44,728	42,385
Sonoma	40,696	38,083
Bakersfield	32,435	31,033
Stanislaus	31,817	30,637
San Marcos	7,245	12,350
International programs	2,465	2,462
Compensation		11,127
Systemwide offices	65,221	116,677
Subtotal, CSU,	1,702,739	1,645,250
Hastings College of Law	13,623	13,718
California Maritime Academy	7,075	7,103
Community Colleges	1,751,062	1,715,253
Student Aid Commission	160,123	166,528
Postsecondary Education Comm	3,594	3,012
<b>Total</b>	<b>\$5,773,949</b>	<b>\$5,662,752</b>

**COLORADO**

State tax-fund appropriations for the operating expenses of higher education for fiscal years 1990-91 and 1991-92 in Colorado.

Institutions	Sums appropriated (in thousands of dollars)	
	1990-91(R)	1991-92
University of Colorado*	\$143,919	\$149,464
Health Sciences Center**	25,112	18,372
<b>Subtotal, U of C</b>	<b>169,031</b>	<b>167,836</b>
State Board of Agriculture***	84,901	88,171
Ag experiment station	7,592	7,960
Ag extension service	7,258	7,574
Forest service	3,091	3,170
<b>Subtotal, St Bd of Ag</b>	<b>102,842</b>	<b>106,875</b>
U of Northern Colorado	29,025	30,087
Colorado School of Mines	11,135	11,548
Trustees of State Colls†	51,030	53,064
St Bd Comm Colls and Occupational Education		
State Community Colleges	63,222	65,898
State aid district jr colls	14,483	15,062
Occupational education	26,579	29,568
<b>Subtotal, SBCCOE</b>	<b>104,284</b>	<b>110,528</b>
Auraria Higher Ed Center**		
Council on Arts and Humanities	1,505	1,613
State Historical Society	1,575	1,630
Colorado Advanced Tech Inst	2,828	3,117
Commission on Higher Education	1,551	1,710
Student aid	33,090	34,916
Vet and Ntl Guard tuition	421	421
Other	441	440
<b>Subtotal, CCHE</b>	<b>35,503</b>	<b>37,487</b>
<b>Total</b>	<b>\$508,758</b>	<b>\$523,785</b>

\*Appropriated to the Board of Regents for allocation to the campuses at Boulder, Denver, and Colorado Springs.

\*\*Includes sums for indigent medical care.

\*\*\*The State Board of Agriculture governs the U of Southern Colorado, Ft. Lewis College, and Colorado State U.

†Includes Mesa State College, Metropolitan State College, Western State College and Adams State College.

\*\*Funded by transfers from the Regents of the U of Colorado, Trustees of State Colleges and the State Community Colleges.

**CONNECTICUT**

State tax-fund appropriations for the operating expenses of higher education for fiscal years 1990-91 and 1991-92 in Connecticut.

Institutions	Sums appropriated (in thousands of dollars)	
	1990-91(R)	1991-92
University of Connecticut	\$137,161	\$129,255
Health center	54,362	51,136
<b>Subtotal, U of C</b>	<b>191,523</b>	<b>180,391</b>
State Universities		
Southern	31,314	30,275
Central	32,197	31,129
Western	16,230	15,692
Eastern	13,619	13,167
Central office	2,082	2,013
<b>Subtotal, S U's</b>	<b>95,442</b>	<b>92,276</b>

*continued*

*Connecticut continued*

CNVR Higher Education Center	3,186	3,028
Regional community colleges	65,247	63,744
State technical colleges	16,881	17,462
Department of Higher Education	4,047	3,117
Payment to others	20,776	20,103
Bd for State Academic Awards	642	610
New Eng Brd of Higher Ed	264	280
Fringe benefits (est)	124,598	122,737
<b>Total</b>	<b>\$522,606</b>	<b>\$503,748</b>

**DELAWARE**

State tax-fund appropriations for the operating expenses of higher education for fiscal years 1990-91 and 1991-92 in Delaware.

Institutions	Sums appropriated (in thousands of dollars)	
	1990-91(R)	1991-92
University of Delaware	\$ 62,469	\$ 64,593
Scholarships & financial aid	3,843	3,644
State geologist	1,079	935
Sea grant	355	359
<b>Subtotal, U of D</b>	<b>67,746</b>	<b>69,531</b>
Delaware State College	17,549	18,278
Institute of Med Ed & Research	1,557	1,557
Institute of Veterinary Med Ed	130	116
Institute of Dental Ed & Resea	94	98
Technical & Comm Colleges	28,513	29,609
Postsecondary Ed Commission	1,840	1,822
<b>Total</b>	<b>\$117,429</b>	<b>\$121,011</b>

**FLORIDA**

State tax-fund appropriations for the operating expenses of higher education for fiscal years 1990-91 and 1991-92 in Florida.

Institutions	Sums appropriated (in thousands of dollars)	
	1990-91(R)	1991-92
State University System		
University of Florida	\$ 173,255	\$ 159,875
Health center	87,198	84,480
Inst of Food & Ag Science	95,316	91,549
<b>Subtotal, U of F</b>	<b>355,769</b>	<b>335,904</b>
University of South Florida	122,643	116,899
Medical center	44,880	44,891
<b>Subtotal, U of SF</b>	<b>167,523</b>	<b>161,790</b>

*continued*



GEORGIA

Florida continued

Florida State University	132,475	128,331
Florida International U	69,421	67,963
U of Central Florida	65,303	63,115
Florida Atlantic U	53,703	49,739
Florida A&M University	42,481	37,593
U of West Florida	31,397	30,855
U of North Florida	26,559	26,104
System reserve	153	6,616
Board of Regents	8,067	8,031
SREB	428	448
Teaching hospital	9,307	
High technology	408	2,076
Budget and tax reform	918	691
Center for Health Tech	350	
Foundation on Aging	48	
Subtotal, BcR*	19,526	11,246
Subtotal, St U Sys	964,310	919,256
Student Financial Assistance	47,022	62,049
Postsecondary Ed Plan Comm	742	758
Private Institutions		
University of Miami		
Medical School*	13,395	11,919
Other programs	4,290	3,600
Subtotal, U of M	17,685	15,519
Barry University	479	594
Florida Inst Tech	581	581
Mt Sinai, Radiologic Tech	74	45
Edward Waters	750	500
Bethune-Cookman	676	676
Nova University	495	495
Florida Southern	114	146
Comm hospital ed prog*	6,697	5,801
SE Coll Osteopathic Med*	2,353	2,187
SECOM rural unmet needs*	105	96
Tuition asst, private insts	18,216	18,216
Other Assistance	1,000	882
Subtotal, Pvt Insts	49,225	45,738
State aid to community coll	483,848	455,280
State Board of Comm Coll	3,138	3,399
Subtotal, C C's	486,986	458,679
<b>Total</b>	<b>\$1,548,285</b>	<b>\$1,486,480</b>

\*This subtotal does not include the programs at private institutions which have been assigned to the Board of Regents. These are marked with an asterisk.

State tax-fund appropriations for the operating expenses of higher education for fiscal years 1990-91 and 1991-92 in Georgia.

	Sums appropriated (in thousands of dollars)	
	1990-91(R)	1991-92
<b>Institutions</b>		
University of Georgia	<b>\$199,268</b>	<b>\$184,103</b>
Ag experiment station	35,424	31,677
Coop extension service	34,795	26,363
Veterinary experiment station	3,060	2,468
Skidaway Inst of Oceanography	1,577	1,351
Marine extension service	1,250	979
Marine Institute	1,000	855
Veterinary teaching hospital	526	452
Minority business	355	299
Athens/Tifton veterinary lab	66	
Subtotal, U of G	277,321	248,547
Medical College of Georgia	70,069	65,685
Talmadge Memorial Hospital	31,923	28,751
Family Practice Residency	6,203	5,866
Desegregation program	386	324
Subtotal, MC of G	108,581	100,626
Georgia Inst of Technology	88,126	83,303
Research Institute	11,444	9,818
Education extension service	853	514
Advanced technology develop	1,474	1,365
Agricultural research	1,365	1,138
Center for Rehabilitation	960	912
Subtotal, GIT	104,222	97,050
Georgia State University	96,800	92,267
Senior Colleges		
Georgia Southern College	36,155	38,642
Valdosta State College	21,775	20,689
West Georgia College	21,035	20,773
Kennesaw College	20,705	20,361
Georgia College	14,579	14,258
Columbus College	15,294	14,119
Southern College of Tech	14,150	13,109
Augusta College	12,658	12,600
Fort Valley State College	12,183	11,093
Savannah State College	11,579	10,657
Albany State College	11,460	10,608
Armstrong State College	10,367	10,360
Clayton State College	8,896	8,529
North Georgia College	8,492	8,437
Georgia Southwestern College	9,331	8,399
Subtotal, S C's	228,659	222,634

continued

Georgia continued

Junior Colleges		
DeKalb College	22,887	24,778
Macon College	7,738	7,740
Abraham Baldwin Ag College	7,619	7,172
Gainesville College	5,688	5,739
Middle Georgia College	6,168	5,654
Darton College	5,452	5,252
Floyd College	4,541	4,477
Dalton College	4,347	4,463
South Georgia College	4,551	4,242
Atlanta Metropolitan College	4,077	3,984
Gordon College	4,055	3,946
Brunswick College	4,176	3,851
Bainbridge College	2,568	2,447
Waycross College	1,930	1,857
East Georgia College	1,825	1,647
<b>Subtotal, J C's</b>	<b>87,622</b>	<b>87,249</b>
Regents of University System	5,565	4,495
SREB payments	9,194	7,779
Repairs/rehabilitation fund	22,763	
Medical scholarships	1,020	1,014
Regents opportunity grants	600	564
Regents scholarships	200	188
Information technology	3,330	3,603
Georgia Military College		781
Public telecommunications		6,152
<b>Subtotal, R of US</b>	<b>51,678</b>	<b>24,576</b>
Unallocated reserve	6,400	1,371
<b>Total</b>	<b>\$961,283</b>	<b>\$874,320</b>

HAWAII

State tax-fund appropriations for the operating expenses of higher education for fiscal years 1990-91 and 1991-92 in Hawaii.

Institutions	Sums appropriated (in thousands of dollars)	
	1990-91(R)	1991-92
University of Hawaii		
University of Hawaii, Manoa	\$154,621	\$169,067
School of medicine	12,696	13,788
School of nursing	2,769	2,713
Ag experiment station	10,006	14,380
Coop extension service	5,073	6,830
<b>Subtotal, U of H, M</b>	<b>185,165</b>	<b>206,778</b>
University of Hawaii, Hilo	20,071	24,016
West Oahu College	1,579	1,777
Community Colleges	60,766	68,916
Systemwide support	19,976	20,389
<b>Subtotal, U of H</b>	<b>287,557</b>	<b>321,876</b>
WICHE	1,068	1,125
Fringe benefits (est)	24,300	22,700
Less tuition/other revenues	-22,000	-24,500
<b>Total</b>	<b>\$290,925</b>	<b>\$321,201</b>

IDAHO

State tax fund appropriations for the operating expenses of higher education for fiscal years 1990-91 and 1991-92 in Idaho.

Institutions	Sums appropriated (in thousands of dollars)	
	1990-91(R)	1991-92
University of Idaho	\$ 51,755	\$ 54,319
Ag research & coop extension	14,997	16,414
WAMI medical education	1,973	2,111
WOI veterinary medicine	923	912
Forestry research	456	436
Geological survey	478	538
<b>Subtotal, U of I</b>	<b>70,582</b>	<b>74,730</b>
Boise State University	39,137	42,003
Idaho State University	33,894	36,496
Lewis-Clark State College	6,384	6,866
Competitive Research	2,500	2,500
Small Business Center		214
Junior College support	8,393	9,123
Vocational education	19,513	20,418
State Board of Education	1,307	1,086
Scholarships and grants	1,630	1,685
Medical education	657	760
<b>Subtotal SBE</b>	<b>3,594</b>	<b>3,531</b>
<b>Total</b>	<b>\$183,997</b>	<b>\$195,881</b>

ILLINOIS

State tax-fund appropriations for the operating expenses of higher education for fiscal years 1990-91 and 1991-92 in Illinois.

Institutions	Sums appropriated (in thousands of dollars)	
	1990-91(R)	1991-92
University of Illinois		
Urbana/Champaign	\$ 274,272	\$ 272,680
Chicago	280,150	279,076
Central Administration	46,980	42,139
<b>Subtotal, U of I</b>	<b>601,402</b>	<b>593,895</b>
Southern Illinois University		
Carbondale	130,802	130,973
Edwardsville	53,526	54,438
Central Admin	2,154	2,137
<b>Subtotal, SIU</b>	<b>186,482</b>	<b>187,548</b>
Board of Regents		
Northern Illinois University	92,354	91,648
Illinois State University	67,700	69,326
Sangamon State University	17,710	17,934
Board office	1,398	1,386
<b>Subtotal, BoR</b>	<b>179,162</b>	<b>180,294</b>
Board of Governors		
Western Illinois University	46,996	45,222
Eastern Illinois University	38,580	37,459
Northeastern Illinois U	32,696	31,626
Chicago State University	27,634	25,282
Governors State University	19,415	18,464
Board Office	2,132	2,323
<b>Subtotal, BoG</b>	<b>167,453</b>	<b>160,376</b>

continued

*Illinois continued*

Illinois Community College Bd	247,393	250,816
Board office	1,463	1,523
<b>Subtotal, ICCB</b>	<b>248,856</b>	<b>252,339</b>
IL Student Assist Commission	3,043	3,254
Scholarships and grants	196,285	207,000
Savings/Loan Prog	4,255	1,670
<b>Subtotal, ISSC</b>	<b>203,583</b>	<b>211,924</b>
Board of Higher Education	2,220	2,243
Grant programs*	47,771	50,313
<b>Subtotal, BHE</b>	<b>49,991</b>	<b>52,556</b>
Univ Civil Service Merit Bd	928	930
Other Appropriations		
Vets/MIA depend scholarships	455	532
Health, life insurance (est)	76,573	84,521
Worker/unemploy insurance	5,130	4,039
Tech trans/innovation grants	14,659	5,165
Small business dev centers	642	642
<b>Subtotal, other</b>	<b>97,459</b>	<b>94,899</b>

**Total** **\$1,735,316** **\$1,734,761**

\*Includes (in \$1,000s):  
 Grants to private insts 17,078 17,213  
 Health education grants 19,133 18,791  
 Institutional grant programs 11,560 14,309

**INDIANA**

State tax-fund appropriations for the operating expenses of higher education for fiscal years 1990-91 and 1991-92 in Indiana.

Institutions	Sums appropriated (in thousands of dollars)	
	1990-91	1991-92
Indiana University		
Bloomington	\$149,669	\$149,940
IUPUI-Indianapolis*	55,719	57,740
Health Division	77,030	78,188
Medical education**		
Family Practice	1,334	1,334
Regional campuses		
South Bend	12,227	14,088
Northwest	11,784	12,249
Southeast	9,221	10,247
Kokomo	6,225	6,581
East	3,107	3,759
Higher ed telecommunications***	5,215	5,215
Developmental Training Center	2,073	2,073
Chemical test training	536	536
Optometry education	2	29
Ft Wayne, 2nd-yr med school	325	
Natl inst fitness	200	
<b>Subtotal, IU</b>	<b>334,667</b>	<b>341,979</b>

*continued*

*Indiana continued*

Purdue University		
West Lafayette	178,386	181,404
IUPU-Fort Wayne†	21,248	22,373
Regional campuses		
Calumet	16,910	17,926
North Central	5,398	6,081
Technology Programs	3,843	3,910
County extension service	3,563	3,563
Ag experiment station	2,639	2,679
Animal Disease Diagnosis Lab	2,367	2,752
Crop production research ctr	55	55
Valparaiso nursing	85	85
Ag Extension/Research	3,000	3,000
<b>Subtotal, PU</b>	<b>237,494</b>	<b>243,828</b>
Ball State U**	98,078	101,337
Indiana State U	63,540	64,397
U of Southern Indiana	12,787	14,326
Vincennes U	21,218	22,570
Indiana Voc Tech Coll	54,305	55,469
Commission for Higher Education	1,234	1,234
Coll placement assessment ctr	788	788
Student Assistance Commission	48,650	51,870
Program start-up fund	500	1,594
Elkhart Planning Study	120	
Endowment for Excellence		100
Univ-based business assist	1,221	
Library Automation	1,560	150

**Total** **\$876,162** **\$899,643**

\*Acronym for Indiana U-Purdue U at Indianapolis, which includes professional schools and other units of Indiana U, and some academic programs of Purdue U.

\*\*Some programs formerly listed here have been transferred to IUPUI health division.

\*\*\*Statewide multi-media communications network, providing services to both public and private institutions.

†Dual campus of Indiana U and Purdue U.

††Includes funds for the Academy of Math, Science and Arts.  
 FY1991: \$2,000,000; FY1992: \$3,140,000.

## IOWA

State tax-fund appropriations for the operating expenses of higher education for fiscal years 1990-91 and 1991-92 in Iowa.

Institutions	Sums appropriated (in thousands of dollars)	
	1990-91(R)	1991-92
University of Iowa	\$177,190	\$169,797
Psychiatric hospital	6,880	6,592
Hospital school	5,431	5,203
Oakdale campus	2,891	2,771
Family practice med training	1,809	1,732
Subtotal, U of I,	194,201	186,095
Iowa State University	144,275	138,207
Ag and home ec exper station	21,961	21,024
Coop extension service	16,836	16,117
Fire service education	417	397
Livestock research	300	282
Subtotal, ISU,	183,789	176,027
University of Northern Iowa	58,129	56,711
Board of Regents Office	1,152	1,079
Tri-State Graduate Center	75	69
Council Bluffs Graduate Cent	40	36
Quad Cities Grad Center	145	145
Subtotal, Board Office	1,412	1,329
Subtotal, Regents programs	437,531	420,162
Area Colleges*	100,672	103,779
College Aid Commission	326	335
Pvt college tuition grants**	32,209	31,424
State scholarships***	814	787
Voc-tech tuition grants	1,315	1,272
University of Osteopathy**	874	803
GSL repayment	410	305
Aid Displaced Worker	293	
Work study	3,085	2,985
Minority grant†	400	
Grad Student Assist	100	74
Access to Ed Grant	148	
National Guard Loan Prog	250	218
Iowa Grants***	1,350	1,426
Subtotal, CAC,	41,574	39,629
<b>Total</b>	<b>\$579,777</b>	<b>\$563,570</b>

\*Include a portion appropriated in the budget year and a portion appropriated in the following fiscal year, but designated for expenditures during the budget year.

\*\*Support for private institutions only.

\*\*\*Portions of these programs are appropriated to private colleges.

†Amount appropriated to private colleges. The Regents' portion is included in the general appropriation.

## KANSAS

State tax-fund appropriations for the operating expenses of higher education for fiscal years 1990-91 and 1991-92 in Kansas.

Institutions	Sums appropriated (in thousands of dollars)	
	1990-91(R)	1991-92
University of Kansas	\$100,754	\$ 97,247
Medical center	66,167	64,260
Subtotal, U of K	166,921	161,507
Kansas State University	103,554	103,587
Veterinary medical center	7,790	8,024
Subtotal, KSU	111,344	111,611
Wichita State University	47,549	46,805
Pittsburg State University	21,845	22,060
Emporia State University	20,529	20,444
Fort Hays State University	20,324	20,382
Kansas Technical Institute	4,039	4,051
Board of Regents	8,719	9,628
Subtotal, Regents System	401,270	396,488
Aid to Washburn University	5,992	5,992
Aid to community colleges	44,037	44,037
<b>Total</b>	<b>\$451,299</b>	<b>\$446,517</b>

## KENTUCKY

State tax-fund appropriations for the operating expenses of higher education for fiscal years 1990-91 and 1991-92 in Kentucky.

Institutions	Sums appropriated (in thousands of dollars)	
	1990-91(R)	1991-92
University of Kentucky	\$151,195	\$231,189
Medical Center*	64,914	
UK Community Colleges	51,789	58,775
Subtotal, U of K,	267,898	289,964
University of Louisville	68,517	126,389
Medical Center*	52,637	
Subtotal, U of L	121,154	126,389
Eastern Kentucky U	47,435	48,812
Western Kentucky U	46,620	47,521
Murray State U	34,624	35,260
Morehead State U	28,727	29,216
Northern Kentucky U	24,282	24,744
Kentucky State U	15,567	15,868
Ky Higher Ed Assist Authority	17,171	17,053
Council on Higher Ed	5,150	4,999
EPSCoR	600	1,425
<b>Total</b>	<b>\$609,228</b>	<b>\$641,251</b>

\*For FY1991-92, the appropriations to the medical centers are reported in the figures for the main campuses.

**LOUISIANA**

State tax-fund appropriations for the operating expenses of higher education for fiscal years 1990-91 and 1991-92 in Louisiana.

Institutions	Sums appropriated (In thousands of dollars)	
	1990-91	1991-92
<b>LA State University System</b>		
Baton Rouge	\$ 99,259	\$102,694
Medical center	119,361	69,948
Ctr for Ag Sci & Rural Dev	49,275	50,376
Veterinary medicine	13,096	13,403
Law center	4,440	4,640
Pennington Biomed Reseach	5,022	4,693
New Orleans campus	31,339	32,720
Shreveport campus	8,386	8,485
Alexandria campus	4,451	4,558
Eunice campus	3,300	3,306
System Board	1,319	1,244
<b>Subtotal, LSU,</b>	<b>339,248</b>	<b>296,067</b>
<b>Board of Trustees System</b>		
U of Southwestern LA	39,012	41,479
Louisiana Tech U	26,846	28,659
Northeast LA U	26,214	28,304
Southeastern LA U	19,919	22,352
Grambling State U	17,730	18,210
McNeese State U	17,890	18,112
Northwestern State U	15,946	17,562
Nicholls State U	16,633	17,074
Delgado Comm College	12,196	16,913
System Board	664	651
<b>Subtotal, Bd of T</b>	<b>193,050</b>	<b>209,316</b>
<b>Southern University System</b>		
Baton Rouge	33,585	33,344
New Orleans	8,928	9,007
Shreveport	4,386	4,416
System Board	703	631
<b>Subtotal, SUS,</b>	<b>47,602</b>	<b>47,398</b>
LA U Marine Consortium	1,560	1,436
Board of Regents, admin	1,774	1,630
Faculty Pay Plan		14,789
Taylor Plan	2,469	
Aid to Private Schools		3,700
<b>Total</b>	<b>\$585,703</b>	<b>\$574,336</b>

**MAINE**

State tax-fund appropriations for the operating expenses of higher education for fiscal years 1990-91 and 1991-92 in Maine.

Institutions	Sums appropriated (In thousands of dollars)	
	1990-91(R)	1991-92
University of Maine	\$143,669	\$144,527
Public broadcasting network	2,366	2,288
<b>Subtotal, U of M</b>	<b>146,035</b>	<b>146,815</b>
Vocational education	24,963	25,008
Maine Maritime Academy	7,032	7,034
Grant/loan/scholarships	1,203	1,140
Incentive scholarships	5,113	4,831
Other scholarships	1,940	1,837
<b>Total</b>	<b>\$186,286</b>	<b>\$186,665</b>

**MARYLAND**

State tax-fund appropriations for the operating expenses of higher education for fiscal years 1990-91 and 1991-92 in Maryland.

Institutions	Sums appropriated (In thousands of dollars)	
	1990-91(R)	1991-92
University of Maryland		
College Park	\$221,174	\$215,732
Baltimore City	111,393	106,920
Towson State University	49,013	47,984
Baltimore County	45,095	44,048
Frostburg State College	20,161	19,747
Salisbury State College	19,125	18,735
University of Baltimore	19,106	18,516
Eastern Shore	15,927	15,274
Bowie State College	17,732	17,398
Coppin State College	13,983	13,624
University College	3,549	3,482
Ag experiment station	13,777	6,994
Coop extension service	17,255	16,774
Ctr, environ & estuarine	8,531	8,276
Biotech & sea grant	8,102	7,930
System administration	8,968	9,154
<b>Subtotal, U of M,</b>	<b>592,891</b>	<b>570,588</b>
Morgan State University	31,777	31,252
St. Mary's Coll of Maryland	10,404	10,039
State scholarship board	21,369	22,239
Higher Education Commission	4,945	9,750
Aid to private higher ed	25,559	28,388
Aid to community colleges	121,950	132,029
State Bd for Comm Colls	1,031	601
<b>Subtotal, C C's</b>	<b>122,981</b>	<b>132,630</b>
<b>Total</b>	<b>\$809,926</b>	<b>\$804,886</b>

**MASSACHUSETTS**

State tax-fund appropriations for the operating expenses of higher education for fiscal years 1990-91 and 1991-92 in Massachusetts.

Institutions	Sums appropriated (In thousands of dollars)	
	1990-91(R)	1991-92
University of Massachusetts		
Amherst	\$135,868	\$113,872
Boston	50,636	42,409
Lowell	44,573	37,453
Southeastern Mass Univ	28,070	23,621
Medical School	24,896	21,026
President's office	285	240
<b>Subtotal, U of M</b>	<b>284,328</b>	<b>238,621</b>
State Colleges		
Salem	18,305	15,673
Bridgewater	17,300	14,772
Fitchburg	14,633	12,510
Worcester	11,724	9,943
Westfield	11,831	9,902
Framingham	11,571	9,900
Mass Maritme	7,060	9,960
North Adams	8,072	6,756
Mass College of Art	7,748	6,519
<b>Subtotal, S C's</b>	<b>108,244</b>	<b>91,935</b>
Community Colleges		
Springfield	12,551	10,608
Massasoit	11,500	9,738
North Shore	11,675	9,895
Northern Essex	10,026	8,459
Bunker Hill	9,174	7,729
Holyoke	8,999	7,607
Middlesex	10,280	8,700
Bristol	7,450	6,272
Quinsigamond	6,990	5,952
Roxbury	7,671	6,372
Berkshire	6,218	5,258
Mass Bay	6,183	5,236
Cape Cod	5,882	5,038
Mt Wachusett	5,740	4,849
Greenfield	5,051	4,253
<b>Subtotal, C C's</b>	<b>125,390</b>	<b>105,966</b>
Board of Regents	3,078	3,341
Scholarships	57,038	26,900
Other	10,797	5,556
Fringe benefits	104,020	108,147
Collective bargaining	4,353	4,003
<b>Total</b>	<b>\$697,248</b>	<b>\$583,569</b>

**MICHIGAN**

State tax-fund appropriations for the operating expenses of higher education for fiscal years 1990-91 and 1991-92 in Michigan.

Institutions	Sums appropriated (In thousands of dollars)	
	1990-91	1991-92
University of Michigan		
Ann Arbor	\$265,871	\$273,402
Dearborn	17,885	18,407
Flint	16,044	16,498
<b>Subtotal, U of M, all units</b>	<b>299,800</b>	<b>308,307</b>
Michigan State University	225,271	231,431
Ag experiment station	22,163	23,481
Coop extension service	19,861	20,740
<b>Subtotal, MSU</b>	<b>267,295</b>	<b>275,652</b>
Wayne State University	183,518	189,021
Western Michigan U	83,048	85,130
Eastern Michigan U	62,280	63,725
Central Michigan U	56,781	58,282
Ferris State College	39,778	40,890
Michigan Tech U	39,374	40,411
Northern Michigan U	38,069	39,175
Oakland University	35,555	36,138
Grand Valley State College	27,986	28,718
Saginaw Valley College	16,448	16,879
Lake Superior State College	10,270	10,498
Upper Peninsula Health Project	657	674
Supportive Services		1,673
Other	6,343	502
<b>Subtotal, U's &amp; C's</b>	<b>1,167,202</b>	<b>1,195,675</b>
Scholarships and Grants		
Competitive scholarships	27,283	28,012
Private tuition grants	49,196	50,467
Private dental grants	3,832	3,928
Private general degree	4,403	4,513
Private allied health	709	727
Indian tuition	1,718	4,931
Michigan work-study	6,080	6,232
Part-time students	2,202	2,257
Robert C. Byrd Scholarship	500	500
Congress teachers scholarship	750	750
Ed opportunity grants	1,099	1,127
Other	475	
<b>Subtotal, S &amp; G</b>	<b>98,247</b>	<b>103,444</b>
Aid to community colleges	225,465	241,100
Less Federal Funds	-4,220	-4,220
<b>Total</b>	<b>\$1,486,694</b>	<b>\$1,535,999</b>

**MINNESOTA**

State tax-fund appropriations for the operating expenses of higher education for fiscal years 1990-91 and 1991-92 in Minnesota.

Institutions	Sums appropriated (in thousands of dollars)	
	1990-91(R)	1991-92
University of Minnesota*	\$ 367,871	\$361,569
Special appropriations	99,584	85,217
LCMR	2,042	2,853
<b>Subtotal, U of M</b>	<b>469,497</b>	<b>449,639</b>
State University System**	175,677	183,134
Community College System***	97,481	99,486
Technical College System†	170,598	164,516
Higher Education Coordinating Board		
State Grant Program	77,731	80,643
Tuition reciprocity	5,050	6,625
Work study	5,454	5,869
MINITEX library	1,083	1,208
Other	3,994	3,324
<b>Subtotal, HECB</b>	<b>93,312</b>	<b>97,669</b>
Mayo Medical school**	1,091	985
<b>Total</b>	<b>\$1,007,656</b>	<b>\$995,429</b>

\*Includes campuses at Minneapolis/St. Paul, Duluth and Morris, two-year technical colleges at Crookston and Waseca; as well as medical, agricultural and other programs.

\*\*Includes the campuses at Mankato, St. Cloud, Moorhead, Bemidji, Winona; Southwest State at Marshall; and Metropolitan State in the Twin Cities.

\*\*\*Includes 13 state-operated institutions.

†Includes 33 state-funded, locally-operated postsecondary institutions.

\*\*Private institution.

**MISSISSIPPI**

State tax-fund appropriations for the operating expenses of higher education for fiscal years 1990-91 and 1991-92 in Mississippi.

Institutions	Sums appropriated (in thousands of dollars)	
	1990-91(R)	1991-92
U of Mississippi	\$ 37,973	\$ 37,530
Medical Center	63,675	63,618
Pharmaceutical research	1,488	1,355
Off-campus centers	485	485
Mineral resources institute	366	336
Law research institute	306	299
<b>Subtotal, U of M</b>	<b>104,293</b>	<b>103,623</b>
Mississippi State U	48,219	46,758
Ag & forest experiment sta	15,985	14,701
Coop extension	14,788	13,525
Coll of veterinary med	7,284	6,951
State chemical lab	1,203	1,084
Forest products lab	2,321	2,213
Off-campus centers	1,047	1,047
Water resources institute	130	123
<b>Subtotal, MSU</b>	<b>90,977</b>	<b>86,402</b>

*continued*

*Mississippi continued*

U of Southern Mississippi	41,667	40,389
Off-campus centers	2,907	2,927
Gulf Coast Research Lab	2,898	2,651
<b>Subtotal, U of SM</b>	<b>47,472</b>	<b>45,967</b>
Jackson State U	18,795	18,358
Delta State U	11,861	11,356
Alcorn State U	9,352	9,212
Miss U for Women	8,030	7,099
Miss Valley State U	6,962	6,965
Vocational education	47,132	47,168
Junior Colleges	70,645	69,077
Bd for Comm Colls	282	306
Universities Research Center	3,047	
Education & Research Ctr	1,065	4,705
Board of Trustees	1,485	
Student financial aid	2,079	2,073
<b>Total</b>	<b>\$423,477</b>	<b>\$412,311</b>

**MISSOURI**

State tax-fund appropriations for the operating expenses of higher education for fiscal years 1990-91 and 1991-92 in Missouri.

Institutions	Sums appropriated (in thousands of dollars)	
	1990-91(R)	1991-92
University of Missouri	\$309,778	\$299,246
Southwest	50,904	49,356
Central	38,170	37,009
Southeast	30,776	29,840
Northeast	26,901	26,083
Northwest	18,330	17,773
Southern	12,555	12,174
Western	12,500	12,120
Lincoln	10,221	9,910
Harris-Stowe	4,853	4,705
Aid to public jr colleges	66,894	66,736
Missouri Student Grant Program	18,671	18,392
Coord Board for Higher Ed	1,593	1,221
<b>Total</b>	<b>\$602,146</b>	<b>\$584,565</b>

**MONTANA**

State tax-fund appropriations for the operating expenses of higher education for fiscal years 1990-91 and 1991-92 in Montana.

Institutions	Sums appropriated (in thousands of dollars)	
	1990-91	1991-92
University of Montana	\$ 29,509	\$ 34,111
Forestry experiment station	688	738
<b>Subtotal, U of M</b>	<b>30,197</b>	<b>34,849</b>
Montana State University	37,520	42,367
Ag experiment station	7,112	7,773
Coop extension service	2,577	2,985
<b>Subtotal, MSU</b>	<b>47,209</b>	<b>53,125</b>
Coll of Mineral Science & Tech	7,709	8,447
Bureau of Mines	1,330	1,338
<b>Subtotal, CMST</b>	<b>9,039</b>	<b>9,785</b>
Eastern Montana College	11,352	12,913
Northern Montana College	6,397	7,156
Western Montana College	3,659	4,112
Board of Regents	33	33
Commissioner's Office	841	1,127
Student assistance	4,739	4,994
Community college	3,182	3,816
<b>Total</b>	<b>\$116,648</b>	<b>\$131,910</b>

**NEBRASKA**

State tax-fund appropriations for the operating expenses of higher education for fiscal years 1990-91 and 1991-92 in Nebraska.

Institutions	Sums appropriated (in thousands of dollars)	
	1990-91	1991-92
University of Nebraska		
Lincoln	\$134,658	\$138,909
Medical center	63,832	66,872
Omaha	35,578	37,027
Kearney*	18,853	19,177
System office	20,436	19,720
<b>Subtotal, U of N</b>	<b>273,357</b>	<b>281,705</b>
State Colleges		
Wayne	8,635	9,144
Chadron	8,058	8,510
Peru	4,523	4,664
System office	439	453
<b>Subtotal, S C's</b>	<b>21,655</b>	<b>22,771</b>
Technical Community Colleges	32,148	33,129
Coordinating Commission	191	605
Student Aid	1,771	1,896
<b>Total</b>	<b>\$329,122</b>	<b>\$340,106</b>

\*Former state college became a campus of the U of Nebraska in FY1991-92.

**NEVADA**

State tax-fund appropriations for the operating expenses of higher education for fiscal years 1990-91 and 1991-92 in Nevada.

Institutions	Sums appropriated (in thousands of dollars)	
	1990-91	1991-92
U of Nevada, Reno	\$ 41,541	\$ 50,014
School of medicine	8,518	10,793
Ag experiment station	3,639	4,181
Coop extension service	3,139	3,707
Intercollegiate athletics	1,012	1,136
Statewide programs	3,264	3,726
<b>Subtotal, U of N, R</b>	<b>61,113</b>	<b>73,557</b>
U of Nevada, Las Vegas	43,508	55,886
Statewide programs	417	479
Intercollegiate athletics	1,012	1,136
<b>Subtotal, U of N, LV</b>	<b>44,937</b>	<b>57,501</b>
Community College Division		
Clark County	13,307	18,706
Truckee Meadows	8,647	11,889
Western Nevada	5,232	7,091
Northern Nevada	2,682	3,951
<b>Subtotal, C C's</b>	<b>29,868</b>	<b>41,637</b>
Business Center North	1,059	1,263
Business Center South	889	1,012
System computing center	5,196	6,578
Desert Research Institute	1,617	2,086
University Press	306	466
National Direct Student Loan	30	30
System administration	1,572	1,772
Salary Adjust	13,815	5,451
Merit Increases*	2,922	
Special Projects		420
<b>Total</b>	<b>\$163,324</b>	<b>\$191,773</b>

\*For FY1992, included in institutional budgets.

**NEW HAMPSHIRE**

State tax-fund appropriations for the operating expenses of higher education for fiscal years 1990-91 and 1991-92 in New Hampshire.

Institutions	Sums appropriated (in thousands of dollars)	
	1990-91(R)	1991-92
U of New Hampshire, Durham	\$32,122	\$32,156
Ag experiment station	1,753	2,591
Coop extension	1,122	1,640
Extension work, counties	376	697
Consulting center	120	122
Marine research & development	625	737
New Hampshire Network	1,715	1,666
<b>Subtotal, UNH, Durham</b>	<b>37,833</b>	<b>39,609</b>
U of NH, Manchester	1,031	1,180
<b>Subtotal, U of NH</b>	<b>38,864</b>	<b>40,789</b>

*continued*



*New Hampshire continued*

Keene State College	6,661	6,945
Plymouth State College	7,520	7,373
School of Lifelong Learning	722	893
<b>Subtotal, UNH System</b>	<b>53,767</b>	<b>56,000</b>
Postsecondary Ed Commission	230	254
Incentive program	525	525
Veterinary medicine schools	198	179
Optometry school	30	21
Med school, Dartmouth	200	200
New England Bd of Higher Ed	83	98
Nurses leverage grants	50	40
Nursing scholarship	50	40
War orphans scholarships	10	10
Leveraged incentive grant	347	347
<b>Subtotal, PEC</b>	<b>1,723</b>	<b>1,714</b>
Postsecondary ed admin & support	1,076	1,490
New Hamp Technical Institute	5,231	4,937
Vocational-Technical Colleges		
Manchester	2,486	2,488
Claremont	1,895	1,945
Berlin	1,930	1,820
Nashua	1,878	1,785
Stratham	1,614	1,535
Laconia	1,359	1,461
<b>Subtotal, VT's</b>	<b>16,393</b>	<b>15,971</b>
<b>Total</b>	<b>\$72,959</b>	<b>\$75,175</b>

**NEW JERSEY**

State tax-fund appropriations for the operating expenses of higher education for fiscal years 1990-91 and 1991-92 in New Jersey.

Institutions	Sums appropriated (in thousands of dollars)	
	1990-91(R)	1991-92
Rutgers, State U of NJ	\$ 216,514	\$ 229,020
Ag experiment station	19,137	20,057
<b>Subtotal, Rutgers</b>	<b>235,651</b>	<b>249,077</b>
U of Medical & Dental of NJ	150,517	161,855
NJ Institute of Technology	38,308	40,541
State Colleges		
Montclair	34,179	35,866
Paterson	30,571	31,799
Trenton	29,088	30,211
Glassboro	27,757	28,624
Kean	27,464	28,562
Jersey City	25,143	26,063
Stockton	16,020	16,797
Ramapo	15,109	15,590
Thomas Edison	3,332	3,706
<b>Subtotal, S C's</b>	<b>208,663</b>	<b>217,218</b>

*continued*

*New Jersey continued*

Health related programs		
Private dental school aid	2,500	2,400
School of nursing aid	833	833
Ver med ed program	1,427	1,427
Optometric education	236	151
Graduate med education	126	126
Institute of Medical Res.	790	790
Moorehouse College	35	
<b>Subtotal, HR</b>	<b>5,947</b>	<b>5,727</b>
Other support programs		
Technology and computers	100	
Humanities/foreign language		200
Scholarly Chairs	575	575
Special student populations	1,724	1,724
Other academic support	2,585	3,735
Urban/minority programs	3,860	5,085
System support	573	528
<b>Subtotal, other</b>	<b>9,417</b>	<b>11,847</b>
Student aid	104,093	117,688
Chancellor's office, admin	8,615	8,450
Fringe benefits (est)	198,254	217,904
Aid to county colleges	80,879	82,005
Aid to private univ & coll	20,580	20,120
<b>Total</b>	<b>\$1,060,924</b>	<b>\$1,132,432</b>

**NEW MEXICO**

State tax-fund appropriations for the operating expenses of higher education for fiscal years 1990-91 and 1991-92 in New Mexico.

Institutions	Sums appropriated (in thousands of dollars)	
	1990-91	1991-92
University of New Mexico	\$ 95,878	\$ 99,889
Medical school	24,272	25,233
Cancer center	1,620	1,606
Medical-related programs	8,535	8,248
State medical investigator*	1,913	1,956
Gallup branch	3,042	3,271
Los Alamos branch	1,087	1,196
Valencia branch	1,638	1,841
<b>Subtotal, U of NM</b>	<b>137,985</b>	<b>143,240</b>
New Mexico State U	61,983	63,003
Ag experiment station	7,390	7,811
Ag extension service	5,389	5,626
St Dept of Agriculture*	4,120	4,241
Research Center	410	373
Alamogordo branch	2,816	2,956
Carlsbad branch	1,743	1,799
Dona Ana branch	3,151	3,818
Grants branch	1,334	1,275
<b>Subtotal, NMSU</b>	<b>88,336</b>	<b>90,902</b>
Eastern New Mexico U	17,278	17,467
Roswell branch	4,263	4,363
<b>Subtotal, ENMU</b>	<b>21,541</b>	<b>21,830</b>

*continued*

*New Mexico continued*

NM Inst of Mining & Tech	11,548	12,063
State Bureau of Mines*	2,805	2,782
Research Center	1,141	1,145
<b>Subtotal, NMIMT</b>	<b>15,494</b>	<b>15,990</b>
NM Highlands U	11,447	11,597
Western New Mexico U	8,011	8,190
Community Colleges		
Northern New Mexico Com Col	4,385	4,496
Clovis branch	4,191	4,139
Santa Fe Com Col	3,789	3,612
San Juan College	1,572	2,061
New Mexico Junior College	1,476	1,613
<b>Subtotal, CC's</b>	<b>15,413</b>	<b>15,921</b>
Vocational-Technical Schools		
Technical-Vocational Inst	16,927	19,397
Luna Area Vocational School	4,324	4,531
Tucumcari Area Vocational School	1,374	1,469
<b>Subtotal, Voc-tech</b>	<b>22,625</b>	<b>25,397</b>
Commission on Higher Education	961	979
WICHE	68	72
State work-study	3,048	
Student Incentive Grants	7,175	
Student Financial Aid		11,578
Student loans	150	
Student exchange grants**	2,089	2,244
Small Business Develop Ctrs	900	
Day Care Services	75	
Educ Options Info	150	
Other		1,438
<b>Subtotal, CHE</b>	<b>14,616</b>	<b>16,311</b>
<b>Total</b>	<b>\$335,468</b>	<b>\$349,378</b>

\*State function administered through the institution.

\*\*Includes WICHE student exchange program and a supplementary dental, veterinary and optometry student exchange program.

**NEW YORK**

State tax-fund appropriations for the operating expenses of higher education for fiscal years 1990-91 and 1991-92 in New York.

Institutions	Sums appropriated (in thousands of dollars)	
	1990-91(R)	1991-92
State University of New York (SUNY)		
University Centers		
Stony Brook	\$ 178,499	\$ 179,898
Buffalo	219,142	217,554
Albany	100,546	99,538
Binghamton	73,406	73,969
<b>Subtotal, U Ctrs</b>	<b>571,593</b>	<b>570,959</b>
Medical Centers		
Downstate (NYC)	61,998	61,816
Upstate (Syracuse)	40,741	41,996
<b>Subtotal, Med Ctrs</b>	<b>102,739</b>	<b>103,812</b>

*continued*

*New York continued*

Colleges of Arts & Science		
Buffalo	49,524	49,781
Brockport	36,380	36,574
Oswego	35,594	35,825
New Paltz	32,500	31,579
Oneonta	29,767	29,620
Cortland	28,764	28,952
Plattsburgh	28,916	28,699
Fredonia	26,105	26,450
Geneseo	26,332	26,354
Potsdam	24,688	24,326
Purchase	23,406	23,022
Old Westbury	18,515	18,362
<b>Subtotal, C of A&amp;S</b>	<b>360,491</b>	<b>359,544</b>
Statutory Colleges		
Land-Grant at Cornell	118,487	118,865
Ceramics at Alfred U	7,391	7,499
<b>Subtotal, State Colls</b>	<b>125,878</b>	<b>126,364</b>
Specialized Colleges		
Environment Sci & Forest	23,219	23,271
Empire State	18,987	18,948
Coll of Technology	13,600	12,958
Optometry	16,303	16,811
Maritime	10,275	10,087
<b>Subtotal, Spec Colls</b>	<b>82,384</b>	<b>82,075</b>
Agricultural & Technical Colleges		
Farmingdale	33,904	33,543
Alfred	20,643	20,518
Cobleskill	14,828	14,958
Morrisville	14,333	14,280
Delhi	13,806	13,618
Canton	11,772	11,575
<b>Subtotal, A&amp;T Colls</b>	<b>109,286</b>	<b>108,492</b>
University-wide programs	121,178	67,773
Fringe benefits	316,721	266,483
Cornell land script	34	35
<b>SUNY gross total</b>	<b>1,790,304</b>	<b>1,685,537</b>
Less student fees, etc.	-340,280	-440,355
<b>SUNY net tax fund total</b>	<b>1,450,024</b>	<b>1,245,182</b>
Cornell coop & extension	3,350	3,015
Community Colleges		
SUNY	258,175	287,156
CUNY	102,518	107,325
<b>Subtotal, CC's</b>	<b>360,693</b>	<b>394,481</b>
Other Programs		
Aid to CUNY	641,342	574,074
Tuition assistance	400,000	394,800
Aid to independent colls	179,618	118,025
Scholar & fellowships	30,903	14,403
Higher ed services corp	14,956	10,089
Higher ed administration	6,125	3,611
Chairs, science-humanities	500	500
Aid to native Americans	385	385
Aid to academic libraries	2,220	2,154
<b>Subtotal, other</b>	<b>1,276,049</b>	<b>1,118,041</b>
<b>Total</b>	<b>\$3,090,116</b>	<b>\$2,760,719</b>

**NORTH CAROLINA**

State tax-fund appropriations for the operating expenses of higher education for fiscal years 1990-91 and 1991-92 in North Carolina.

Institutions	Sums appropriated (in thousands of dollars)	
	1990-91(R)	1991-92
University of North Carolina		
UNC at Chapel Hill	\$ 134,521	\$ 125,889
Health affairs	99,032	102,488
Area health education ctrs	31,524	31,256
<b>Subtotal, UNC-CH</b>	<b>265,077</b>	<b>259,633</b>
NC Memorial Hospital*	33,780	37,755
NC State U at Raleigh	150,984	151,617
Sch of Veterinary Med	18,372	18,886
Ag research service	35,526	35,427
Ag extension service	28,456	27,490
<b>Subtotal, NCSU</b>	<b>233,338</b>	<b>233,420</b>
East Carolina University**	120,185	124,495
UNC at Charlotte	55,649	55,999
UNC at Greensboro	54,752	54,535
Appalachian State University	51,629	51,958
NC Ag & Tech St Univ	35,217	37,490
Western Carolina University	34,419	34,952
UNC at Wilmington	31,571	32,048
NC Central University	26,361	27,472
Fayetteville State U	16,842	18,420
UNC at Asheville	15,933	16,433
Pembroke State University	15,534	16,077
Winston-Salem State U	15,768	15,960
Elizabeth City State U	14,589	15,210
NC School of the Arts	8,022	7,871
General administration	17,086	13,923
Allocation to institutions	2,631	5,274
Related programs***	45,768	44,417
<b>Subtotal, U of NC</b>	<b>1,094,151</b>	<b>1,103,342</b>
State support of Comm Colls	387,610	339,783
Ed benefits, veterans' children	2,518	2,665
<b>Total</b>	<b>\$1,484,279</b>	<b>\$1,445,790</b>

\*This is a teaching hospital, part of the medical complex at Chapel Hill, but administratively separate from the university at Chapel Hill. It is placed here for comparability with similar institutions in other states.

\*\*Includes:

(in \$1,000s)

School of Medicine	49,014	50,641
***Includes:		
a) to private institutions for financial aid to needy NC graduates	10,938	10,783
b) tuition grant to each full-time NC undergraduate attending a private school	24,566	24,218
c) aid to private medical schools and NC students attending them	2,438	2,373

**NORTH DAKOTA**

State tax-fund appropriations for the operating expenses of higher education for undivided biennia 1989-91 and 1991-93 in North Dakota.

Institutions	Sums appropriated (in thousands of dollars)	
	1990-91	1991-92
U of North Dakota	\$ 64,419	\$ 72,355
Medical center	25,317	27,361
UND Williston*	2,416	3,507
UND Lake Region*	2,298	3,749
<b>Subtotal, U of ND</b>	<b>94,450</b>	<b>106,972</b>
North Dakota State U	55,330	60,968
Ag experiment stations	24,977	26,922
Extension division	9,306	10,760
Bottineau branch	2,787	2,791
State forest service	1,252	1,330
<b>Subtotal, NDSU</b>	<b>93,652</b>	<b>102,771</b>
State College of Science	17,983	19,129
Minot State U	17,331	17,581
Dickinson State U	9,292	9,543
Valley City State U	7,672	8,324
Mayville State U	6,032	6,443
Bismarck St Coll (2-yr)*	6,646	10,438
<b>Subtotal, All Insts</b>	<b>253,058</b>	<b>281,201</b>
Board of Higher Education	1,688	2,124
Student financial assistance	2,733	3,419
Pool of funds	96	1,683
Salary adjustment	700	644
Research EPSCOR	1,238	2,000
<b>Subtotal, BHE</b>	<b>6,455</b>	<b>9,870</b>
<b>Total</b>	<b>\$259,513</b>	<b>\$291,071</b>

\*Beginning with the 1985-87 biennium, the community colleges became state institutions with separate appropriations.

Note: Totals are for the biennia. Half of each total is used in the summary table.

**OHIO**

State tax-fund appropriations for the operating expenses of higher education for fiscal years 1990-91 and 1991-92 in Ohio.

Institutions	Sums appropriated (in thousands of dollars)	
	1990-91(R)	1991-92
Ohio State University	\$ 267,379	\$ 262,428
Clinical teaching	17,359	17,091
Ag research center	21,884	21,671
Ag cooperative extension	14,629	15,243
<b>Subtotal, OSU</b>	<b>321,251</b>	<b>316,433</b>
University of Cincinnati	130,810	129,845
Clinical teaching	11,537	11,422
<b>Subtotal, U of C</b>	<b>142,347</b>	<b>141,267</b>

continued

<i>Ohio continued</i>		
Ohio University	76,050	81,927
University of Akron	79,271	77,796
Kent State University	69,931	70,561
University of Toledo	68,577	69,624
Bowling Green State University	61,727	59,933
Wright State University	60,612	59,107
Cleveland State University	57,292	58,083
Miami University	50,933	50,230
Youngstown State University	42,946	41,493
Central State University	13,347	13,011
Shawnee State University	10,758	11,521
Medical College of Ohio	25,550	26,554
Northeastern Med College	12,446	12,724
Case Western Reserve†	5,356	5,038
Community Colleges	104,433	113,479
University branches	54,637	51,408
Technical Colleges	70,530	78,090
Instructional grants	51,756	63,211
Board of Regents	3,314	3,229
Special projects	13,291	10,547
Academic scholarships	3,591	3,555
Selective excellence	36,320	9,003
STU choice grants**	21,250	18,294
Misc Health Educ	15,404	13,950
<b>Total</b>	<b>\$1,472,920</b>	<b>\$1,460,068</b>

†Subsidy to this private university for education in medicine and dentistry.  
 \*\*Provides aid to students attending in-state private institutions.

### OKLAHOMA

State tax-fund appropriations for the operating expenses of higher education for fiscal years 1990-91 and 1991-92 in Oklahoma.

Institutions	Sums appropriated (in thousands of dollars)	
	1990-91(R)	1991-92
University of Oklahoma	\$ 78,905	\$ 85,723
Health sciences center	53,169	57,949
Law center	3,481	3,772
Geological survey	1,928	2,057
<b>Subtotal, U of O</b>	<b>137,483</b>	<b>149,501</b>
Oklahoma State University	79,507	86,420
Ag experiment station	14,456	15,714
Ag extension division	13,835	14,912
Coll of veterinary medicine	7,681	8,266
Tech Branch-Okmulgee	10,368	11,140
Tech Branch-Oklahoma City	4,845	5,470
Oklahoma Coll of Osteopathy	7,501	8,124
<b>Subtotal, OSU</b>	<b>138,193</b>	<b>150,046</b>

*continued*

<i>Oklahoma continued</i>		
Central State University	26,101	28,486
Northeastern State University	18,898	20,650
Southwestern State University	14,407	15,598
Cameron University	11,993	13,010
East Central State University	10,700	11,624
Southeastern State University	10,469	11,332
Langston University	6,760	7,281
Northwestern State University	4,836	5,236
University of Science & Arts	4,236	4,587
Oklahoma Panhandle State U	4,214	4,545
<b>Subtotal, S U's</b>	<b>112,615</b>	<b>122,349</b>
<b>Junior Colleges</b>		
Tulsa Junior College	18,688	20,256
Rose State College	14,158	15,295
Oklahoma City Comm College	10,492	11,378
Northeastern OK A&M College	6,416	6,930
Rogers State College	5,619	6,083
Eastern OK State College	4,109	4,438
Connors State College	3,602	4,082
Northern Oklahoma College	3,493	3,793
Western OK State College	3,180	3,436
Carl Albert Junior College	3,055	3,299
Murray State College	2,947	3,183
Seminole Junior College	2,921	3,162
El Reno Junior College	2,428	2,626
<b>Subtotal, J C's</b>	<b>81,108</b>	<b>87,961</b>
University Center at Tulsa	2,754	3,034
Ardmore Higher Ed Program	354	418
McCurtain County Higher Ed	380	449
Televised Instruction System	852	852
Kerr Conference Center	188	165
Jane Brooks School-USAO	31	32
Fire service training	571	666
Civil Rights Compliance	687	830
Scholar-leadership program	220	220
Higher education tuition aid	12,496	13,283
Other financial aid	2,389	2,347
Special Programs	670	546
Academic Scholar Program	5,532	5,732
State Regent Administration	2,947	3,666
Enid Higher Ed	150	180
<b>Subtotal</b>	<b>30,223</b>	<b>32,420</b>
<b>Total</b>	<b>\$499,621</b>	<b>\$542,277</b>

**OREGON**

State tax-fund appropriations for the operating expenses of higher education for fiscal years 1990-91 and 1991-92 in Oregon.

Institutions	Sums appropriated (in thousands of dollars)	
	1990-91	1991-92
University of Oregon	\$ 64,636	\$ 65,060
Oregon Health Sciences U	40,669	41,616
Teaching hospital & clinics	12,735	17,751
Crippled children's division	6,267	6,148
Dental clinics	293	348
<b>Subtotal, OHSU</b>	<b>59,964</b>	<b>65,863</b>
Oregon State University	72,478	76,620
Ag experiment station	17,923	18,839
Coop extension service	12,757	13,877
Forest research lab	1,823	1,907
<b>Subtotal, OSU</b>	<b>104,981</b>	<b>111,243</b>
Portland State University	42,757	43,851
Southern Oregon State College	15,076	15,124
Western Oregon State College	13,243	13,441
Oregon Inst of Technology	12,866	13,296
Eastern Oregon State College	9,075	9,283
Centralized activities	9,341	10,765
Ctr for Advanced Tech Education	1,352	1,312
Teaching Resources Division	270	263
NDSL health profess loans	101	97
WICHE	507	527
<b>Subtotal, SSHE</b>	<b>334,169</b>	<b>350,124</b>
Education Policy & Planning	537	508
State Scholarship Comm	12,804	13,176
Community Colleges	72,537	97,347
<b>Total</b>	<b>\$420,047</b>	<b>\$461,155</b>

**PENNSYLVANIA**

State tax-fund appropriations for the operating expenses of higher education for fiscal years 1990-91 and 1991-92 in Pennsylvania.

Institutions	Sums appropriated (in thousands of dollars)	
	1990-91(R)	1991-92
Commonwealth Segment		
State-related Universities:		
Pennsylvania State U	\$ 226,024	\$ 249,266
Medical school	9,084	9,413
<b>Subtotal, PSU</b>	<b>235,108</b>	<b>258,679</b>
Temple University	123,435	134,190
Medical school	8,305	8,606
<b>Subtotal, TU</b>	<b>131,740</b>	<b>142,796</b>
University of Pittsburgh	122,900	133,495
Medical school	6,239	6,465
<b>Subtotal, U of P</b>	<b>129,139</b>	<b>139,960</b>
Lincoln U	9,550	10,242
<b>Subtotal, St-Related</b>	<b>505,537</b>	<b>551,677</b>

continued

*Pennsylvania continued*

State System of Higher Ed		
Indiana	46,858	51,034
West Chester	36,090	39,307
Millersville	26,256	28,596
Bloomsburg	25,980	28,297
Slippery Rock	25,967	28,282
Kutztown	24,840	27,055
Edinboro	24,153	26,307
Clarion	23,541	25,640
Shippensburg	22,749	24,776
California	22,317	24,292
East Stroudsburg	18,951	20,641
Lock Haven	14,145	15,407
Mansfield	13,841	15,126
Cheyney	12,481	12,762
Chancellor's office	1,701	1,855
System reserve	212	797
Minority recruitment	1,415	1,415
Deferred maintenance	3,800	
Faculty development		400
Academy for Teaching	500	500
University Center		292
McKeever Center	318	344
Rural postsecond education		500
Tuition challenge program	3,376	
<b>Subtotal, SSHE</b>	<b>346,115</b>	<b>373,625</b>
Community Colleges (est)	105,858	115,422
Stevens State School of Tech	4,277	4,363
<b>Subtotal, Commonwealth Segment</b>	<b>961,787</b>	<b>1,045,087</b>
Private, State-aided Institutions:		
University of Pennsylvania	24,152	25,027
Medical school	4,435	4,596
School of Veterinary Med	7,725	8,005
<b>Subtotal, U of P</b>	<b>36,312</b>	<b>37,628</b>
Thomas Jefferson U	10,344	10,720
Drexel University	5,644	5,849
Phila Coll Osteopathic Med	5,411	5,607
Hahnemann Med College	5,946	6,461
Medical College of Penn	4,354	4,512
Penn College of Optometry	1,604	1,662
Penn Coll of Podiatric Med	1,321	1,369
Philadelphia U of the Arts	1,081	1,120
Phila Coll of Tex & Science	539	559
Del Val Coll of Sci & Ag	650	659
Berean Training & Indust Sch	1,149	1,544
Johnson School of Tech	202	209
Williamson Sch Mech Trades	73	76
<b>Subtotal, Pvt, St-aided</b>	<b>74,616</b>	<b>77,975</b>

cc onued

*Pennsylvania continued*

Other Higher Education Aid:		
Penn Higher Ed Scholarships	140,558	155,000
Institutional assist grants	29,092	29,092
Student aid-matching grants	6,350	6,350
Equal oppor prof education	750	750
Computer training and purchase	6,780	
Information technology		2,150
Ed at correctional insts	122	122
Higher ed-rural initiatives	254	260
Loan forgiveness	2,922	4,490
Agricultural loan forgiveness		750
Rural postsec ed improve	150	
Higher ed for disadvantaged	7,462	7,497
Tuition challenge program	10,816	
Higher Education Equipment	5,000	4,000
Interdepart transfers (est)	148,723	150,210
Other	500	
<b>Subtotal, other</b>	<b>359,329</b>	<b>360,171</b>
<b>Total</b>	<b>\$1,395,732</b>	<b>\$1,483,233</b>

**RHODE ISLAND**

State tax-fund appropriations for the operating expenses of higher education for fiscal years 1990-91 and 1991-92 in Rhode Island.

Institutions	Sums appropriated (in thousands of dollars)	
	1990-91(R)	1991-92
University of Rhode Island	\$ 60,670	\$ 54,278
Rhode Island College	27,456	25,093
Community Coll of Rhode Island	24,544	22,877
<b>Subtotal, U &amp; C's</b>	<b>112,670</b>	<b>102,248</b>
Office of Higher Education	3,875	3,851
State scholarships	9,755	9,337
New England Higher Ed Compact	93	93
Reg plan—medical, dental	89	
Support of medical education	500	500
Youth intern program	93	99
<b>Total</b>	<b>\$127,075</b>	<b>\$116,128</b>

**SOUTH CAROLINA**

State tax-fund appropriations for the operating expenses of higher education for fiscal years 1990-91 and 1991-92 in South Carolina.

Institutions	Sums appropriated (in thousands of dollars)	
	1990-91(R)	1991-92
University of South Carolina		
Main Campus	\$121,458	\$121,460
Medical school	19,134	18,766
Spartanburg campus	9,323	9,420
Coastal campus	10,328	10,318
Aiken campus	7,522	7,444
Two-year campuses	10,017	10,052
<b>Subtotal, U of SC</b>	<b>177,782</b>	<b>177,460</b>

*continued*

*South Carolina continued*

Clemson University	79,160	79,360
Ag research, ext, inspect	44,964	43,784
<b>Subtotal, CU</b>	<b>124,124</b>	<b>123,144</b>
Medical U of So Carolina	81,210	81,375
Residency programs	14,975	13,779
Hospitals and clinics	18,240	18,781
<b>Subtotal, MU of SC</b>	<b>114,425</b>	<b>113,935</b>
College of Charleston	21,102	21,034
Winthrop College	19,499	19,430
So Carolina State College	19,095	18,851
The Citadel	13,318	13,203
Francis Marion College	12,295	12,296
Lander College	8,160	8,064
<b>Subtotal, S C's</b>	<b>93,469</b>	<b>92,878</b>
Commission on Higher Ed	1,602	1,674
Scholarships, loans, SREB	888	840
Desegregation funds	495	478
Cutting Edge	500	558
<b>Subtotal, CHE</b>	<b>3,485</b>	<b>3,550</b>
Grants to private coll student	17,733	17,625
Board, Tech & Comp Educ	107,278	105,634
<b>Total</b>	<b>\$638,296</b>	<b>\$634,226</b>

**SOUTH DAKOTA**

State tax-fund appropriations for the operating expenses of higher education for fiscal years 1990-91 and 1991-92 in South Dakota.

Institutions	Sums appropriated (in thousands of dollars)	
	1990-91(R)	1991-92
U of South Dakota	\$24,484	\$27,184
Medical school	7,163	7,930
<b>Subtotal U of SD</b>	<b>31,647</b>	<b>35,114</b>
South Dakota State U	27,932	29,410
Ag experiment station	5,349	5,340
Coop extension service	4,175	4,170
Animal Disease Lab		747
<b>Subtotal, SDSU</b>	<b>37,456</b>	<b>39,667</b>
SD School of Mines & Tech	8,884	9,360
Northern State College	8,448	8,774
Black Hills State College	6,303	6,805
Dakota State College	4,773	4,987
Board Office	867	896
Utilities*	2,358	2,474
Computer System	577	852
<b>Subtotal, BO</b>	<b>3,802</b>	<b>4,222</b>
Future Fund (est)	1,400	1,000
Student loans & scholarships	529	479
Other	1,884	1,885
Postsecondary Vocational Educ	7,500	7,813
Less estimated tuition*	-22,008	-22,833
<b>Total</b>	<b>\$90,618</b>	<b>\$97,273</b>

\*Estimated for FY1992.

TENNESSEE

State tax-fund appropriations for the operating expenses of higher education for fiscal years 1990-91 and 1991-92 in Tennessee.

Institutions	Sums appropriated (in thousands of dollars)	
	1990-91(R)	1991-92
University of Tennessee		
Knoxville	\$120,622	\$115,129
Chattanooga	25,219	24,223
Martin	19,328	18,928
Space Institute	4,279	4,198
Medical Units:		
College of Medicine	26,809	25,201
Family Medicine	2,869	2,674
UT Memphis	39,146	37,428
Ag Experiment Station	14,693	14,070
Ag extension service	17,600	16,315
Coll of Veterinary Medicine	9,076	8,652
Municipal Tech Adv Service	1,012	940
County Tech Advisory Service	731	696
Institute for Public Service	3,484	3,339
University-wide admin	2,027	1,847
<b>Subtotal, UT</b>	<b>286,895</b>	<b>273,640</b>
Tennessee Board of Regents		
Board of Regents Universities		
Memphis State U	72,664	69,476
East Tennessee State U*	51,593	49,535
Middle Tennessee State U	43,399	42,823
Tennessee Technological U	31,776	29,645
Tennessee State U	23,965	23,702
Austin Peay State U	17,391	16,519
<b>Subtotal, BoR U's</b>	<b>240,788</b>	<b>221,700</b>
Two-Year Institutions		
State Tech at Memphis	13,208	12,941
Chattanooga	12,925	12,673
Shelby	10,058	9,557
Roane	9,545	9,354
Pellissippi	9,105	9,114
Walters	8,211	8,048
Nashville State Tech	8,006	7,667
Volunteer	7,044	6,904
Cleveland	6,194	6,072
Columbia	6,111	5,992
Jackson	5,960	5,847
Motlow	5,032	4,935
Northeast	4,503	4,510
Dyersburg	3,576	3,506
<b>Subtotal, 2-yr</b>	<b>109,478</b>	<b>107,120</b>

continued

Tennessee continued

Area Voc Tech Schools	24,897	23,728
Foreign Language Inst	183	131
Bd of Regents, admin	2,482	2,378
Subtotal, BoR System	377,828	365,057
Higher Education Commission	1,350	1,326
Contract education**	2,257	2,110
Student Assistance Corp	14,026	13,440
Centers of Excellence	17,919	16,882
Vocational Improvements	356	
Campus Centers of Emphasis	1,304	1,227
Instruction & Research Equipment	5,697	
Chairs of Excellence***	3,653	3,653
Minority Teacher Education	241	250
Teacher Discount Program	302	301
Academic Scholarships	150	76
Mandated Benefits Adjustment		14,440
<b>Total</b>	<b>\$711,978</b>	<b>\$692,402</b>

\*Includes (in \$1,000s):

ETSU College of Medicine	14,473	13,983
ETSU Family Practice	2,132	1,988

\*\*Includes SREB and other contract education programs administered by the Higher Education Commission.

\*\*\*Represents endowment earnings which are attributed to state appropriations for the program.

TEXAS

State tax-fund appropriations for the operating expenses of higher education for fiscal years 1990-91 and 1991-92 in Texas.

Institutions	Sums appropriated (in thousands of dollars)	
	1990-91	1991-92
U of Texas at Austin	\$ 198,230	\$ 198,225
UT at Arlington	59,976	63,625
UT at El Paso	34,322	39,216
UT Pan American	23,943	26,837
UT at Brownsville	3,506	3,828
UT at Dallas	28,748	32,416
UT at San Antonio	29,158	32,348
UT at Tyler	9,116	9,387
UT of the Permian Basin	6,835	6,505
UT Health Science Centers		
Houston	98,923	100,154
San Antonio	81,310	88,026
Dallas	66,745	70,487
Tyler	16,289	16,361
UT Cancer Center	101,828	99,729
UT Medical, Galveston	179,098	192,430
System Administration	340	
<b>Subtotal, UT System</b>	<b>938,367</b>	<b>979,574</b>

continued

Texas continued

Texas A&M University	178,622	175,981
College of Medicine*		12,610
Ag experiment station	40,510	40,838
Ag extension service	35,499	36,039
Forest Service	9,366	9,943
Engineer exper station	6,999	7,371
Engineer exten service	3,434	3,701
Animal control service	2,393	2,414
Veterinary diagnostic lab	2,137	4,803
Transportation institute	1,834	1,825
Prairie View A&M U	16,897	16,651
Tarleton State U	12,142	15,295
A&M U at Galveston	4,691	7,174
Texas A&I U	16,398	17,867
Corpus Christi St U	10,476	11,967
Laredo State U	3,858	4,552
West Texas St U**	13,805	14,943
System administration	340	
<b>Subtotal, A&amp;M System</b>	<b>359,401</b>	<b>383,974</b>
University of Houston	103,360	112,099
Clear Lake	15,925	15,859
Downtown	10,582	11,981
Victoria	3,767	3,577
System administration	1,350	
<b>Subtotal, U of H</b>	<b>134,984</b>	<b>143,516</b>
Texas State U System		
Southwest Texas St U	43,000	44,700
Sam Houston St U	25,708	27,858
Angelo State U	12,345	13,063
Sul Ross State U	6,167	6,299
Sul Ross State U-Uvalde Ctr	875	1,805
System administration	375	
<b>Subtotal, TSU System</b>	<b>88,370</b>	<b>93,725</b>
Lamar University System		
Beaumont	26,158	27,886
Orange	2,382	2,506
Port Arthur	3,484	3,616
System administration	375	
<b>Subtotal, LU</b>	<b>32,399</b>	<b>34,008</b>
Texas Tech U	78,829	85,019
Health science ctr	43,311	44,802
<b>Subtotal, TTU</b>	<b>122,140</b>	<b>129,821</b>
U of North Texas	65,274	71,130
Texas Coll Osteopathy	24,363	26,018
<b>Subtotal, U of NT</b>	<b>89,637</b>	<b>97,148</b>
East Texas State U	18,981	20,203
ETSU at Texarkana	3,391	3,239
<b>Subtotal, ETSU</b>	<b>22,372</b>	<b>23,442</b>

continued

Texas continued

Texas St Tech Inst	43,909	48,274
Texas Woman's U	31,727	33,811
Texas Southern U	24,474	25,178
Stephen Austin St U	27,668	28,468
Midwestern State U	10,758	11,062
Fibers & Food Comm	1,451	1,410
National Research Lab	1,948	29,515
SREB	100	135
Higher Educ Fund	45,500	45,500
State aid to comm colls	510,375	558,165
Coordinating Board	8,734	9,171
Equalization grants	21,279	24,200
Baylor med & dental	45,217	43,317
Family prac residency	7,820	7,932
Resident physician	4,199	
Tech research		39,770
Advance research		19,855
Incentive grant	1,500	1,452
Remedial ed	4,563	5,979
College Work Study		1,936
Other	450	1,468
<b>Subtotal, CB</b>	<b>93,762</b>	<b>155,080</b>
<b>Total</b>	<b>\$2,579,342</b>	<b>\$2,821,806</b>

\*Previously included in the amount for Texas A&M, main campus.

\*\*Formerly reported separately.

UTAH

State tax-fund appropriations for the operating expenses of higher education for fiscal years 1990-91 and 1991-92 in Utah.

Institutions	Sums appropriated (in thousands of dollars)	
	1990-91(R)	1991-92
University of Utah	\$105,461	\$ 109,492
Medical programs	15,972	16,754
Research & public service	5,575	5,436
<b>Subtotal, U of U</b>	<b>127,008</b>	<b>131,682</b>
Utah State University	54,207	56,799
Agricultural programs	13,104	13,728
Research & public service	2,701	2,823
<b>Subtotal, USU</b>	<b>70,012</b>	<b>73,350</b>
Four Year Colleges		
Weber State College	35,325	36,488
Southern Utah State College	11,661	12,177
<b>Subtotal, 4-yr</b>	<b>46,986</b>	<b>48,665</b>
Two Year Colleges		
Snow College	6,456	6,859
Dixie College	6,760	7,159
College of Eastern Utah	6,198	6,662
Utah Tech Coll, Provo	14,197	15,048
Utah Tech Coll, Salt Lake	22,576	25,735
<b>Subtotal, 2-yr</b>	<b>56,187</b>	<b>61,463</b>
Board of Regents	3,264	1,513
Statewide programs	1,776	2,888
<b>Subtotal, BoR &amp; Statewide</b>	<b>5,040</b>	<b>4,401</b>
<b>Total</b>	<b>\$305,233</b>	<b>\$319,561</b>



**VERMONT**

State tax-fund appropriations for the operating expenses of higher education for fiscal years 1990-91 and 1991-92 in Vermont.

Institutions	Sums appropriated (in thousands of dollars)	
	1990-91(R)	1991-92
University of Vermont	\$27,964	\$27,053
Morgan Horse Farm	12	11
<b>Subtotal, U of V</b>	<b>27,976</b>	<b>27,064</b>
State Colleges	15,075	14,691
Vermont Interactive TV	355	344
<b>Subtotal, S C's</b>	<b>15,430</b>	<b>15,035</b>
Student assistance corp	12,212	12,735
Educational TV*	1,079	823
New England Higher Ed Compact	55	55
Higher Ed Planning Comm	33	20
Ed Commission of the States	25	10
<b>Total</b>	<b>\$56,810</b>	<b>\$55,742</b>

\*Formerly included in the appropriation to the University of Vermont. This change should be noted when campus figures are compared over time.

**VIRGINIA**

State tax-fund appropriations for the operating expenses of higher education for fiscal years 1990-91 and 1991-92 in Virginia.

Institutions	Sums appropriated (in thousands of dollars)	
	1990-91(R)	1991-92
University of Virginia	\$ 116,206	\$ 109,269
Hospital Division	38,611	36,013
Clinch Valley College	4,704	4,674
<b>Subtotal, U of V</b>	<b>159,521</b>	<b>149,956</b>
Va Poly Inst & State U	110,155	103,262
Extension Division	30,286	29,921
Research Division	28,126	27,059
<b>Subtotal, VPI &amp; SU</b>	<b>168,567</b>	<b>160,242</b>
Va Commonwealth U	112,470	106,577
Health Sci, hospital	53,205	55,901
<b>Subtotal, VCU</b>	<b>165,675</b>	<b>162,478</b>
College of William & Mary	31,132	29,178
Richard Bland College	2,784	2,612
VIMS	11,314	11,265
<b>Subtotal, CW&amp;M</b>	<b>45,230</b>	<b>43,055</b>
Other Colleges and Universities		
George Mason U	57,335	54,357
Old Dominion U	48,038	45,514
James Madison U	31,214	30,084
Radford U	26,486	24,911
Norfolk State U	23,393	20,297
Virginia State U	15,014	13,797
Longwood College	10,965	10,485
Mary Washington College	10,379	9,699
Christopher Newport College	9,738	9,305
Virginia Military Inst	9,620	8,869
<b>Subtotal, C's &amp; U's</b>	<b>242,182</b>	<b>227,318</b>

*continued*

*Virginia continued*

Community Colleges	182,024	175,107
Student Aid*	20,382	29,483
State Council of Higher Ed	3,755	3,635
Scholarship Assist (CSAP)	4,302	4,302
Tuition Assist (TAGP)	17,537	18,630
Work Study Program	1,650	1,650
Virginia Scholars Program	540	540
Outstanding faculty program	55	55
Eminent scholars	5,264	5,001
Regional grants & contract	454	433
Maintenance of excellence	1,149	1,042
Library services	104	108
<b>Subtotal, SCHEV</b>	<b>34,810</b>	<b>35,396</b>
Eastern VA Med Auth (EVMA)	10,037	9,789
Marshall Research Center	143	
Innov Tech Auth	10,998	10,288
Melchers/Monroe memorials	198	199
Southeastern Univ Res Assoc	926	903
SREB	100	100
VCBA—equipment	21,175	21,175
VA Foundation-humanities	436	
VA Inst of Sci Research	36	
Univ of the 21st Century	1,258	
VA Plan-Equal opportunity	4,787	4,548
SW Virginia Higher Ed Center		75
<b>Subtotal, Other</b>	<b>50,094</b>	<b>47,077</b>
<b>Total</b>	<b>\$1,068,485</b>	<b>\$1,030,112</b>

\*Includes appropriations made directly to higher education institutions for student aid as well as student aid to (in \$1,000s):

Dept of Health	280	480
Dept of Military Affairs	449	350
<b>Total</b>	<b>729</b>	<b>830</b>

Note: Included in the statewide totals are the following appropriations to private institutions (in \$1,000s):

Aid to students attending pvt or out-of-state insts	19,416	20,580
Appropriations to non-state agencies	43,851	42,255
<b>Total, private</b>	<b>63,267</b>	<b>62,835</b>

**WASHINGTON**

State tax-fund appropriations for the operating expenses of higher education for fiscal years 1990-91 and 1991-92 in Washington.

Institutions	Sums appropriated (in thousands of dollars)	
	1990-91(R)	1991-92
University of Washington	\$263,201	\$268,880
Washington State U	147,535	154,113
Western Washington U	41,780	44,080
Eastern Washington U	37,398	39,746
Central Washington U	32,787	34,272
Evergreen State College	20,514	21,338
Community Colleges	279,778	295,700
Spokane Joint Center		306
Higher Ed Coordinating Board	34,142	39,749
<b>Total</b>	<b>\$857,135</b>	<b>\$898,184</b>

**WEST VIRGINIA**

State tax-fund appropriations for the operating expenses of higher education for fiscal years 1990-91 and 1991-92 in West Virginia.

Institutions <sup>1</sup>	Sums appropriated (in thousands of dollars)	
	1990-91(R)	1991-92
State University System		
West Virginia University*	\$ 91,902	\$ 94,382
Health Science Center**	44,678	45,587
WVU at Parkersburg	5,121	5,254
<b>Subtotal, WVU,</b>	<b>141,701</b>	<b>145,223</b>
Marshall University	31,286	32,168
School of Medicine	9,198	9,373
<b>Subtotal, MU</b>	<b>40,484</b>	<b>41,541</b>
WV College Graduate Studies	5,689	5,843
WV School Osteopathic Medicine	5,162	5,247
Central Computer Support	1,538	1,567
System Office	225	430
<b>Subtotal, St U System</b>	<b>194,799</b>	<b>199,851</b>
State College System		
Fairmont State College	11,980	12,444
WV Institute of Technology	9,562	9,791
WV State College	9,525	9,806
West Liberty State College	8,013	8,211
Sheperd College	7,483	7,798
Concord College	6,417	6,590
Glennville State College	5,434	5,595
Bluefield State College	5,299	5,471
WV Northern Comm College	4,133	4,287
Southern WV Comm College	3,942	4,111
Central Computer Support	602	620
System Office	256	350
<b>Subtotal, St Coll System</b>	<b>72,646</b>	<b>75,074</b>
Other Appropriation		
Central Office Administration	1,006	1,015
Higher Ed Grant Program	3,795	3,795
Underwood-Smith Scholarship	600	750
Tuition Contract Programs	606	606
Eminent Scholars Program	150	100
Other (Unallocated)		250
<b>Subtotal, Other</b>	<b>6,157</b>	<b>6,516</b>
Indirect Fringe Benefits (est)	5,210	
Lottery Proceeds	-3,140	-3,520
<b>Total</b>	<b>\$275,672</b>	<b>\$277,921</b>

\*Includes Potomac State College, a two-year branch campus.

\*\*Includes dedicated proceeds of soft drink tax (in \$1000) 9,300 9,300

**WISCONSIN**

State tax-fund appropriations for the operating expenses of higher education for fiscal years 1990-91 and 1991-92 in Wisconsin.

Institutions	Sums appropriated (in thousands of dollars)	
	1990-91	1991-92
University of Wisconsin System		
Doctoral Cluster		
Madison	\$264,492	\$267,208
University Hospitals	2,282	2,282
<b>Subtotal, UW, Madison</b>	<b>266,774</b>	<b>269,490</b>
Milwaukee	87,406	88,738
<b>Subtotal, doctoral</b>	<b>354,180</b>	<b>358,228</b>
University Centers		
Oshkosh	32,736	33,427
Eau Claire	32,593	32,631
Stevens Point	27,761	28,060
Whitewater	27,739	27,854
La Crosse	26,342	26,574
Stout	24,436	24,687
River Falls	19,227	18,978
Platteville	18,558	18,766
Parkside	16,407	17,123
Green Bay	15,470	15,463
Superior	10,274	10,418
<b>Subtotal, U's</b>	<b>251,543</b>	<b>253,981</b>
Centers (2 year)	21,822	23,319
Extension	44,618	45,466
System Administration	8,901	8,857
Systemwide Programs	9,847	12,583
<b>Subtotal, UW-system</b>	<b>690,911</b>	<b>702,434</b>
Voc, Tech, Adult Ed System	105,509	110,827
Medical College of Wisconsin	5,739	6,434
Higher Ed Aids Board	41,384	43,642
<b>Total</b>	<b>\$843,543</b>	<b>\$863,337</b>

**WYOMING**

State tax-fund appropriations for the operating expenses of higher education for the undivided biennia 1988-90 and 1990-92 in Wyoming.

Institutions	Sums appropriated (in thousands of dollars)	
	1990-91	1991-92
University of Wyoming	\$152,771	\$157,541
Community Colleges	73,713	82,840
Comm Coll Commission	414	474
Higher ed computer network*	1,307	5,244
<b>Subtotal, CC</b>	<b>74,127</b>	<b>88,558</b>
WICHE	4,161	3,705
<b>Total</b>	<b>\$232,366</b>	<b>\$249,804</b>

\*Effective July 1, 1992, the computer network will be transferred to the Community College Commission.

Note: The totals above are for the undivided biennia. Half of each is used in the summary table.

---

## Related Sources

Among the national reports that supply data collected, and published later in the year than the data in this report:

*National Comparison of Financial Support for Higher Education*

Jacquelin Johnson  
Higher Education Coordinating Board  
917 Lakeridge Way, M.S. GV-11  
Olympia, Washington 98504

*State Profiles: Financing Public Higher Education*

Kent Halstead  
Research Associates  
2605 Klinge Road, N.W.  
Washington, D.C. 20008

*State Higher Education Profiles*

Center for Education Statistics  
U.S. Department of Education  
Washington, D.C. 20208

State Higher Education Executive Officers  
707 Seventeenth Street, Suite 2700  
Denver, Colorado 80202-3686

**BEST COPY AVAILABLE**

30

ISBN 1-881543-0